

# FROST

LET IT FREEZE!



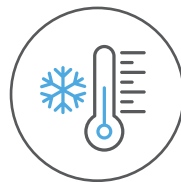
# TREEVOS

## Still looking for the right cooler or freezer LED light? You have just found it.

In the food industry, cooling and freezing is necessary to preserve the freshness of products. Foods must be kept at the right temperature and humidity – some even require a controlled atmosphere to prevent a substantial loss of quality.

While temperatures in freezer rooms, refrigeration chambers and freezer warehouses typically range from 6 to -25 °C, some facilities require temperatures as low as -40 °C.

Our **FROST** and **FROST Plus** product lines are specifically designed to thrive in these challenging conditions without durability or energy efficiency being compromised.



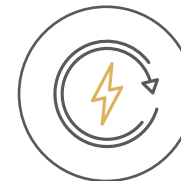
Down to -25°C  
**FROST**



Down to -40°C  
**FROST PLUS**



High  
efficiency



Long  
service life



Chemically  
resistant



IP66

# WHY?

Our **FROST** and **FROST Plus** light fixtures withstand extreme cold while keeping your energy bills low. They boast:

- ✓ resistance to extremely low temperatures
- ✓ minimal maintenance
- ✓ long service life





# BENEFITS

Constant luminous flux even at ambient temperatures as low as -25 °C down to -40 °C

Light fitting protection: IP66

Maximum system efficacy: 136 lm/W

Ambient temperature range for the version with a 1 or 3 hour emergency back-up power supply (M1h, M3h):  $t_a$  -25 to 25 °C

Maximum ambient temperature:  $t_a$  = 25 °C

Lifetime: 50,000 hours / L90B10

Standard model - CRI > 80: 4000 K

At request CRI > 80: 3000 K, 5000 K, 6500 K, CRI > 90: 3000 K, 4000 K

Our FROST line fittings are also available in a dimmable and emergency version

Exceptional thermal resistance:  $t_a$  = -40 °C to 25 °C

MacAdam = 3 SDCM





# APPLICATIONS

## **FOOD INDUSTRY,**

the fixture is an excellent choice for a variety of production and storage facilities, benefiting meat packers, fish processors, as well as farmers, winemakers, cheese producers and dairy companies

## **SUPERMARKETS,**

## **RETAIL,**

## **WHOLESALE**





# APPLICATIONS

**PHARMACEUTICAL,**  
production and warehouses

**CHEMICAL INDUSTRY,**

**LOGISTIC CENTER**  
for cooled and frozen products

**AUTOMOTIVE,**

**TESTING LABORATORIES AND CENTRES**  
where low temperatures are required





# TECHNICAL FEATURES

Diffuser: translucent acrylate (AC), UV stable, chemically resistant

Body: dark grey (ABS), UV stable, chemically resistant

Reflector: steel sheet, white colour (RAL 9003)

Sealing: polyurethane (PUR), foamed body groove

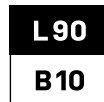
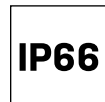
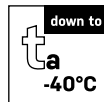
Cable glands: screwed PG 13,5

Distance part: polyamide + 10 % glass fibre

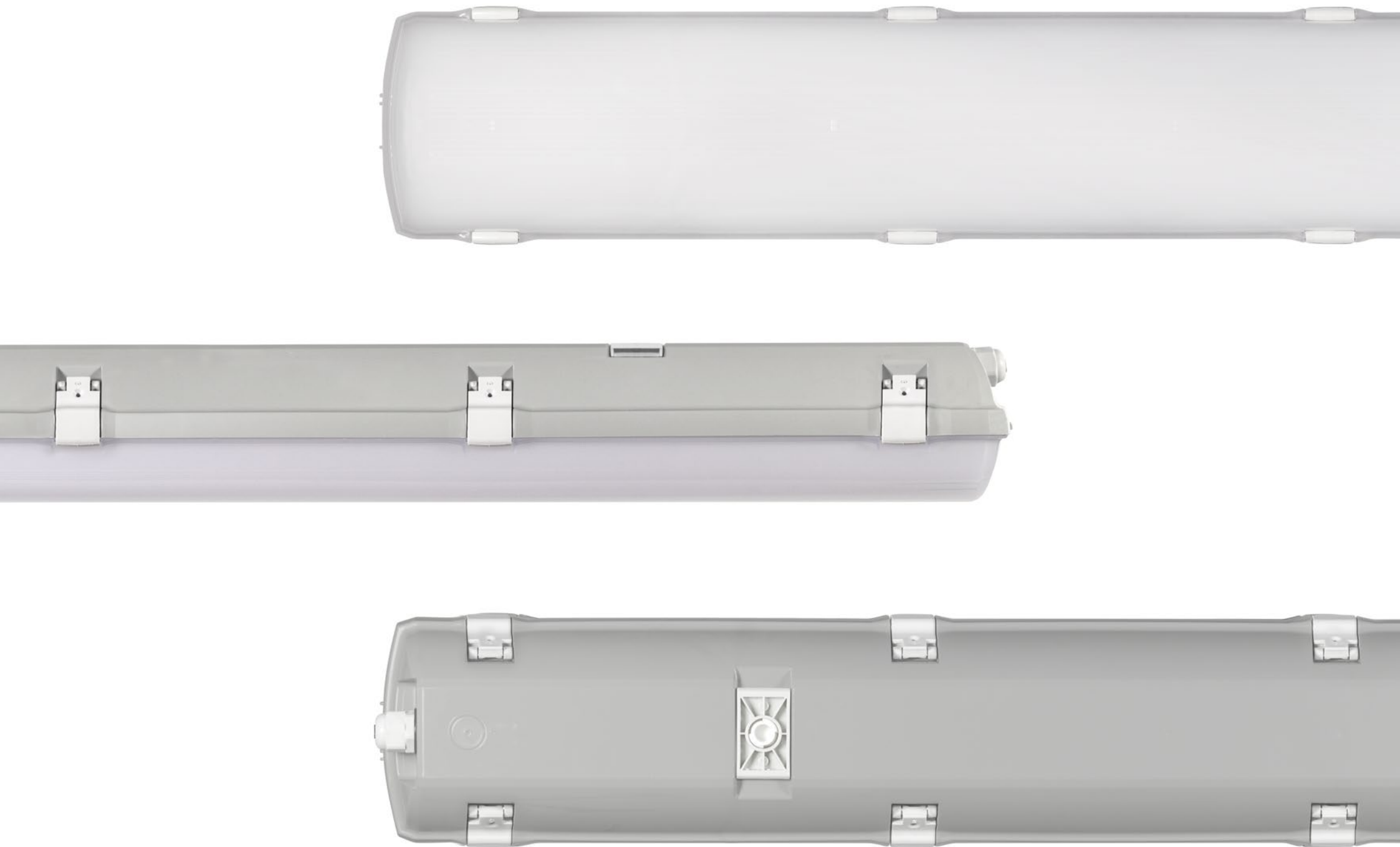
Clips: polyamide + 15 % glass fibre

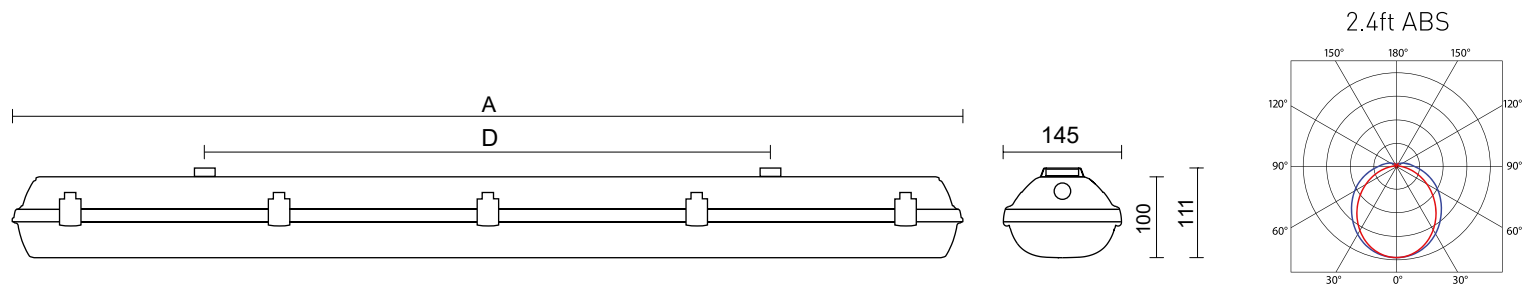
On request: stainless steel clips

Terminal block: screwless, three-pole (basic version)





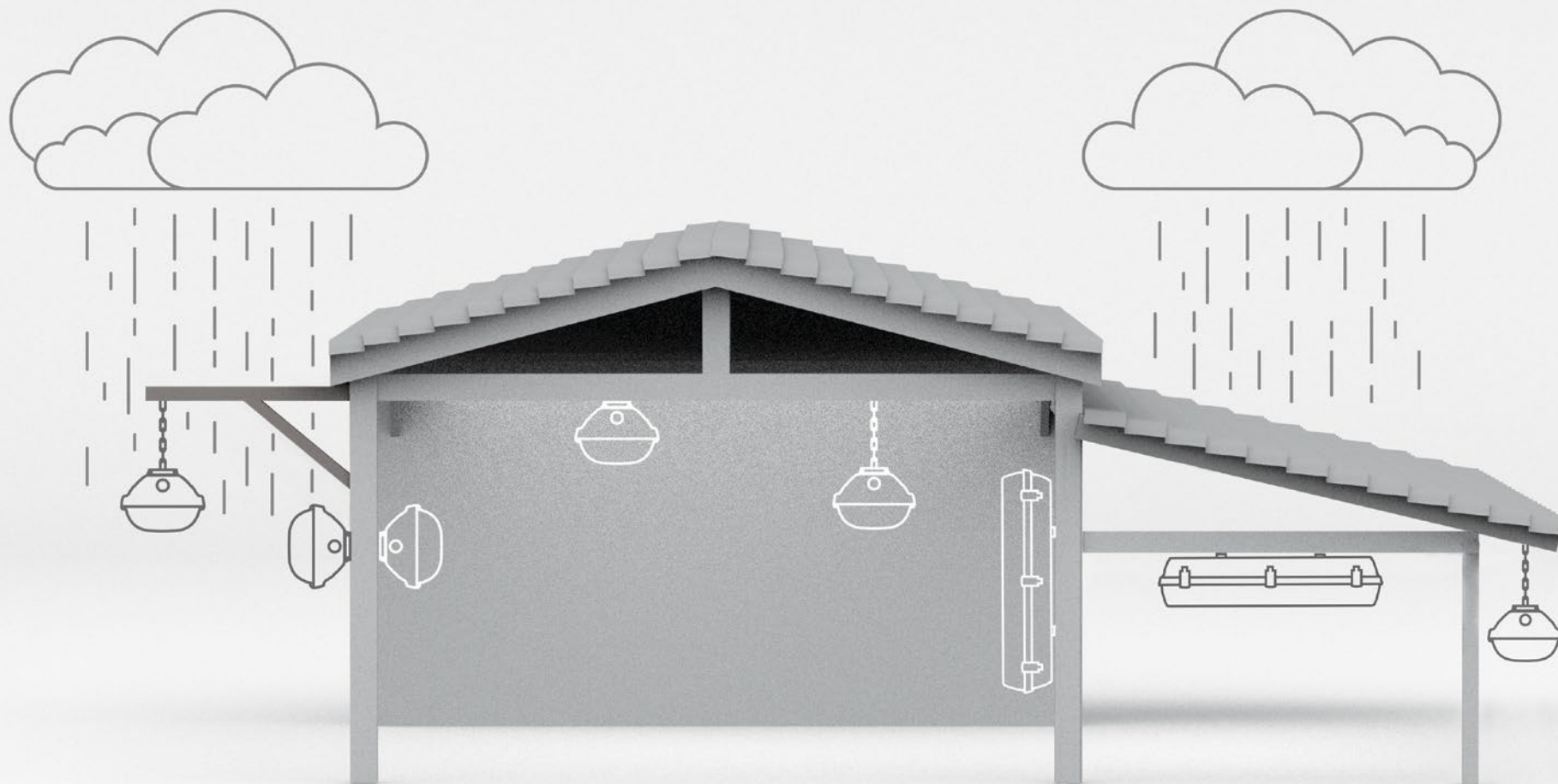




FROST	Ambient temperature [°C]	Luminous flux of LED modules [lm]	Luminous flux of light fitting [lm]	Power consumption [W]	System efficacy [lm/W]	Net weight [kg]	A [mm]	D [mm]
FROST 2.4ft ABS 5200/840	-25	5150	4530	31	146	2,7	1172	700
FROST 2.4ft ABS 6400/840	-25	6260	5510	37	149	2,7	1172	700
FROST 2.4ft ABS 8800/840	-25	8710	7660	51	150	2,8	1172	700
FROST 2.5ft ABS 6500/840	-25	6380	5610	38	148	3,5	1452	940
FROST 2.5ft ABS 8000/840	-25	7750	6820	46	148	3,6	1452	940
FROST 2.5ft ABS 11000/840	-25	12050	10600	71	149	3,6	1452	940

## FROST PLUS

FROST PLUS 2.4ft 5200/840	-40	5150	4530	31	146	2,7	1172	700
FROST PLUS 2.4ft 6400/840	-40	6260	5510	37	149	2,7	1172	700
FROST PLUS 2.4ft 8800/840	-40	8710	7660	51	150	2,8	1172	700
FROST PLUS 2.5ft 6500/840	-40	6380	5610	38	148	3,5	1452	940
FROST PLUS 2.5ft 8000/840	-40	7750	6820	46	148	3,6	1452	940
FROST PLUS 2.5ft 11000/840	-40	12050	10600	71	149	3,6	1452	940



# FROST

**TRE=VOS, a.s.**

Nova Ves 34  
511 01 Turnov  
Czech Republic

Phone: +420 481 363 319  
Email: [trevos@trevos.cz](mailto:trevos@trevos.cz)



[www.trevos.eu](http://www.trevos.eu)