

# TRE VOS

# SEGMENT LINES

**VALUE**



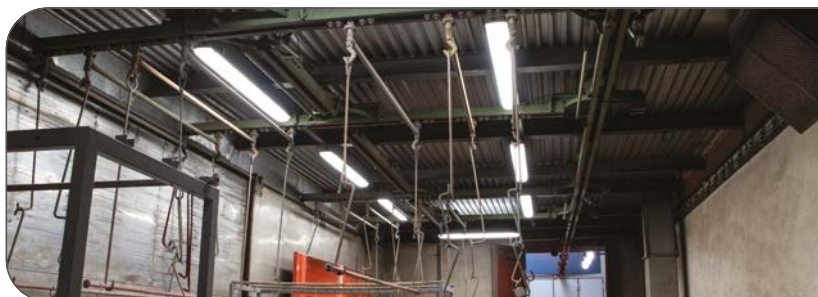
**STANDARD**



**PROFI**



**SPECIAL**



**AGRI**







# WE SPECIALIZE IN THE DEVELOPMENT AND PRODUCTION OF **INDUSTRIAL LUMINAIRES** SINCE 1990

## PERFECTLY ILLUMINATED SPACE

Our range of luminaires is intended both for everyday use and for individual project solutions with special, even extreme requirements.

## EFFICIENT AND ECONOMICAL

In terms of purchase, maintenance and price-performance ratio.

## MARK OF QUALITY

With 30 years of experience, TREVOS is the proven choice when it comes to durable luminaires for demanding environments.

## TECHNICAL SUPPORT

Our team of professionals is available to help you with your lighting design and answer you related technical questions.

## RELIABILITY GUARANTEE

Our luminaires have earned the trust of clients not only in the Czech Republic, but also worldwide. Our wide range of references is proof that we deliver reliable and high-quality lighting that meets the highest expectations.

## CUSTOM LUMINAIRES

We design and manufacture custom-made luminaires.  
We are able to tailor our luminaires to meet the requirements of any project.

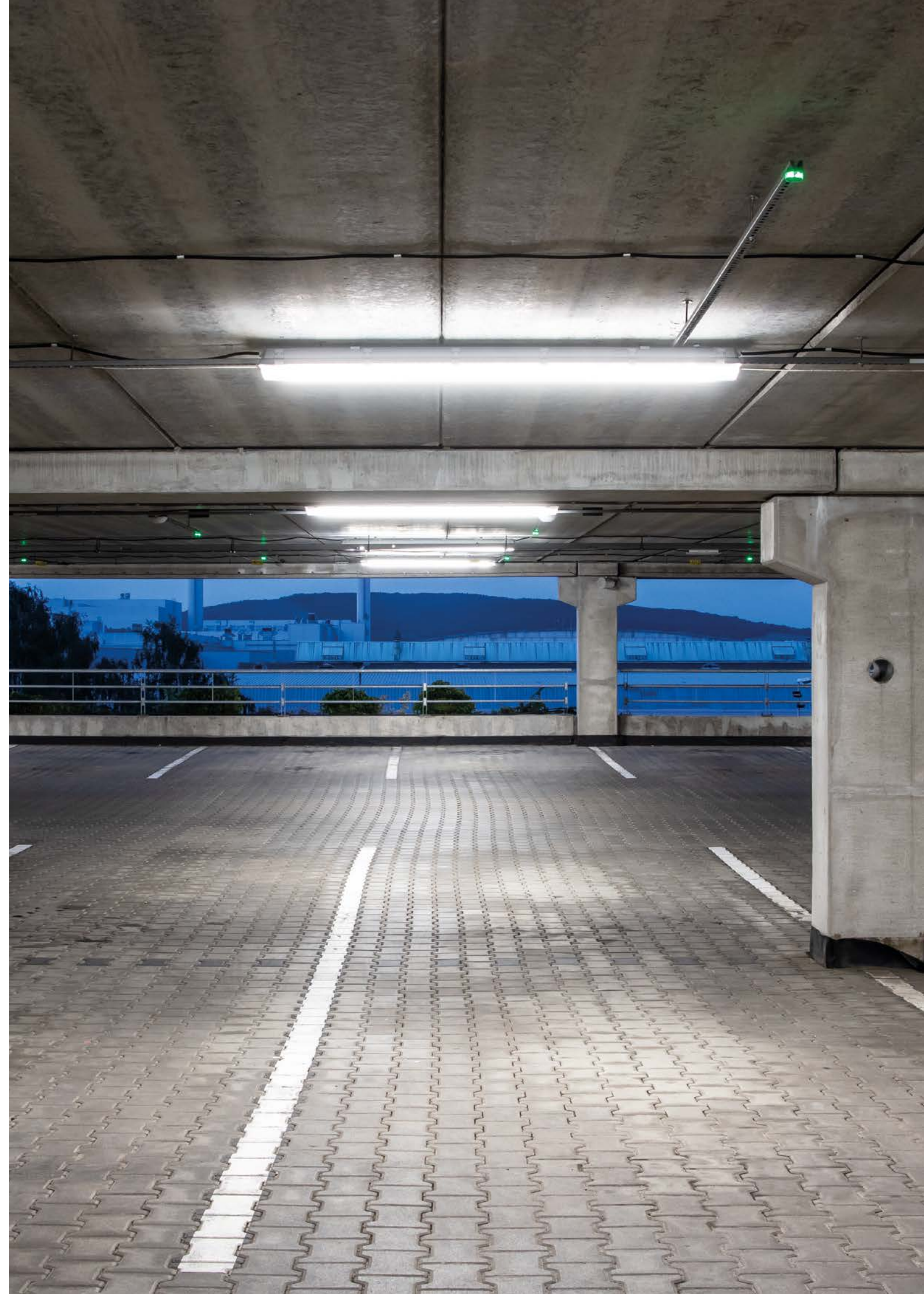
We will calculate the project for you and propose the ideal lighting solution that will meet all your expectations.

## FAST DELIVERY TIMES

Do you need to restock quickly or are you in a hurry to complete a project?  
We can ensure delivery within 2 to 3 working weeks of ordering.

## NO MINIMUM ORDER LIMIT

We also fulfil orders for small quantities of luminaires.







# SEGMENT LINES

5 SEGMENTS  
INFINITE  
NUMBER  
OF VARIANTS

## VALUE

FOR COMMON  
ENVIRONMENTS

### PRIMA VALUE

Industrial plastic LED luminaires that meet your basic requirements. A sought-after product with an ideal PRICE-PERFORMANCE ratio.



#### PARAMETERS:

- Up to 140 lm/W
- ON/OFF
- Cable glands rubber only
- PC, ABS, TRS body
- CRI → 80 only: 4,000 K
- Max. 7470 lm per luminaire



## STANDARD

FOR COMMON  
ENVIRONMENTS

### PRIMA INNOVA

Industrial plastic LED luminaires that meet higher performance or parameter requirements.



#### PARAMETERS:

- Up to 165 lm/W
- ON/OFF, DALI, SNS, PIR
- PG cable glands or E-CON screw terminal
- PC, ABS, TRS base
- ML, NB, WB, VP, CLASS II
- CRI → 80: 3,000 K, 4,000 K, 5,000 K, 6,500 K
- CRI → 90: 3,000 K, 4,000 K, 5,000 K, 6,500 K
- Max. 11570 lm per luminaire



## PROFI

FOR PROFESSIONALS, PROJECT  
LUMINAIRES WITH CUSTOM SOLUTIONS

### NANOTTICA FUTURA

Industrial professional luminaires that meet the highest performance or parameter requirements for special projects.



#### PARAMETERS:

- Up to 180 lm/W
- ON/OFF, DALI, SNS, PIR
- PG cable glands or E-CON terminal block
- PC, ABS, TRS body
- UNIQUE NANO OPTICS
- ML, NB, WB, ES, HE, VP, CLASS II
- CRI → 80: 3,000 K, 4,000 K, 5,000 K, 6,500 K
- CRI → 90: 3,000 K, 4,000 K, 5,000 K, 6,500 K
- Max. 21830 lm per luminaire



## SPECIAL

FOR SPECIAL  
ENVIRONMENTS

### NANOTTICA MAX PRIMA MAX FUTURA MAX FROST MIDDLE EAST Ta 55 ALUMAX LED MAX PRIMA LED Ex TREx PERUN SLIM Ex

Industrial plastic and metal LED luminaires that meet the demanding project requirements for special environments, e.g. with risk of dust, gas and vapour explosions or extremely low/high ambient temperatures.



Luminaire suitable for special conditions such as:

- risk of dust, gas and vapour explosions
- extremely high ambient temperatures
- low ambient temperatures
- categories 2 and 3
- zones 1, 21 and 2, 22



## AGRI

FOR BREEDING AND  
AGRICULTURAL FACILITIES

### CONCEPT RED CONCEPT BLUE NANOTTICA ABS PRIMA ABS INNOVA ABS FUTURA ABS

Industrial plastic LED luminaires that meet the requirements for durability in AGRI facilities.



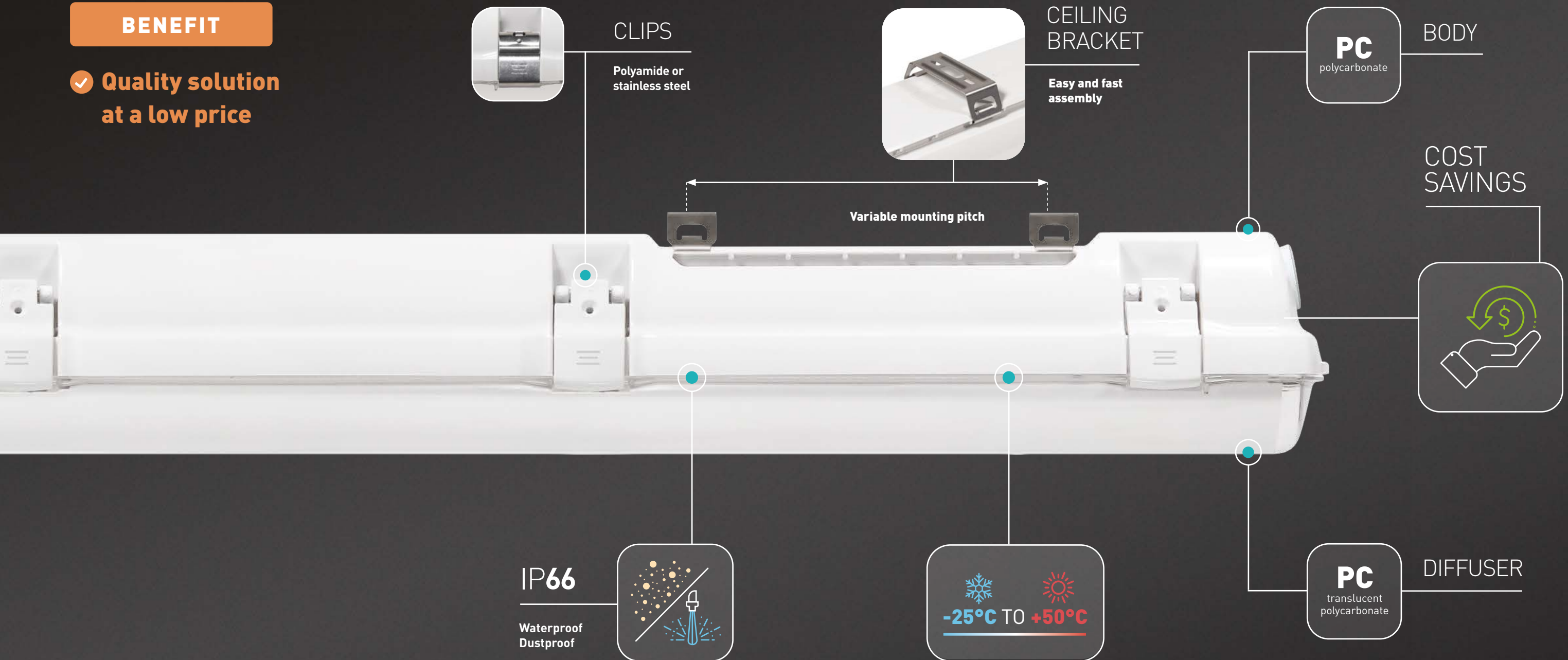
Luminaires developed specially for breeding facilities:

- cattle breeding
- poultry farming
- other agricultural facilities



## BENEFIT

- ✓ **Quality solution at a low price**



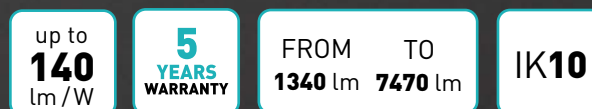
## USE

- garages
- warehouses
- utility rooms
- cellars
- corridors
- environment with low ceilings

### CERTIFICATION:

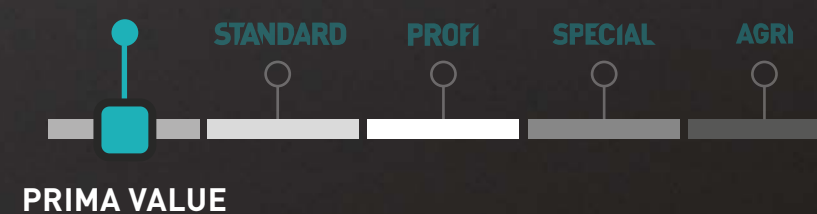


### TECHNICAL DATA:



*\*representative data for the VALUE LINE segment*

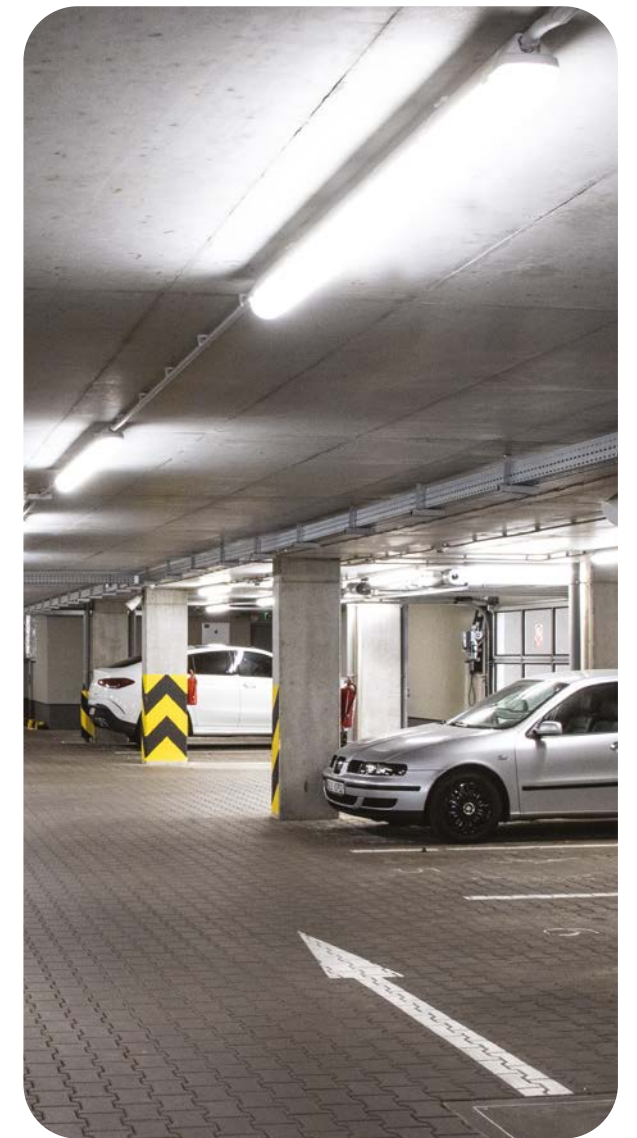
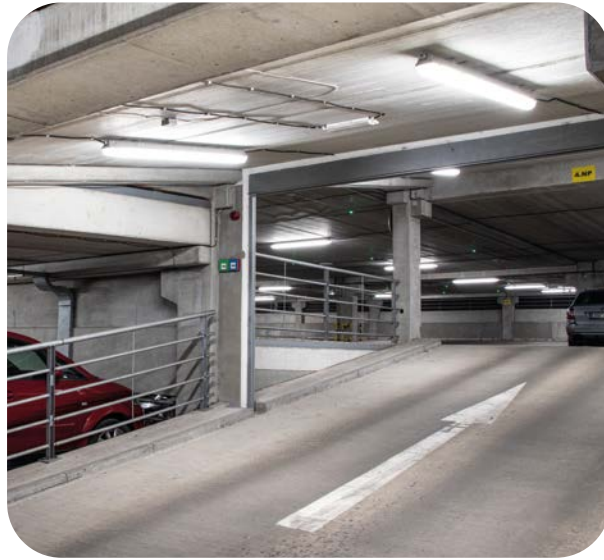
### VALUE



**MORE ABOUT THE PRIMA VALUE LUMINAIRE**









## BENEFITS

- ✓ Ideal price-performance ratio
- ✓ Cost savings



CEILING  
BRACKET

Easy and fast  
assembly

Variable mounting pitch

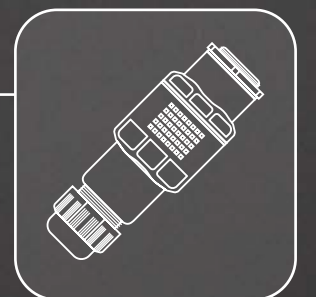
**PC**  
polycarbonate

BODY

HACCP

**HACCP**

Suitable for  
the food industry



E-CON

Available  
for 2, 3, 4 and 5-POLE  
CONFIGURATIONS



Without clips  
- glued

**IP66**  
**IP69**

Waterproof  
Dustproof



**-25°C TO +50°C**

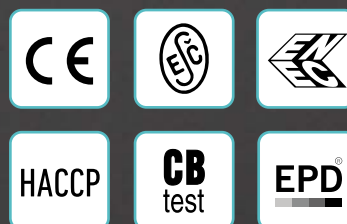
**PC**  
translucent  
polycarbonate

DIFFUSER

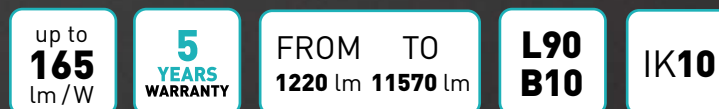
## USE

- industrial halls
- logistics centres
- sports arenas and gymnasiums
- transport terminals
- meat retailers
- food production
- textile factories
- ceramic and stone workshops

### CERTIFICATION:

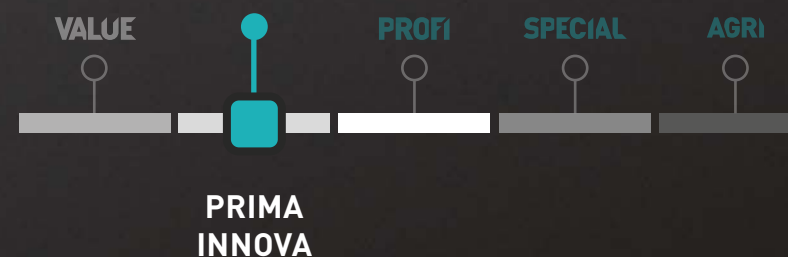


### TECHNICAL DATA:



*\*representative data for the STANDARD LINE segment*

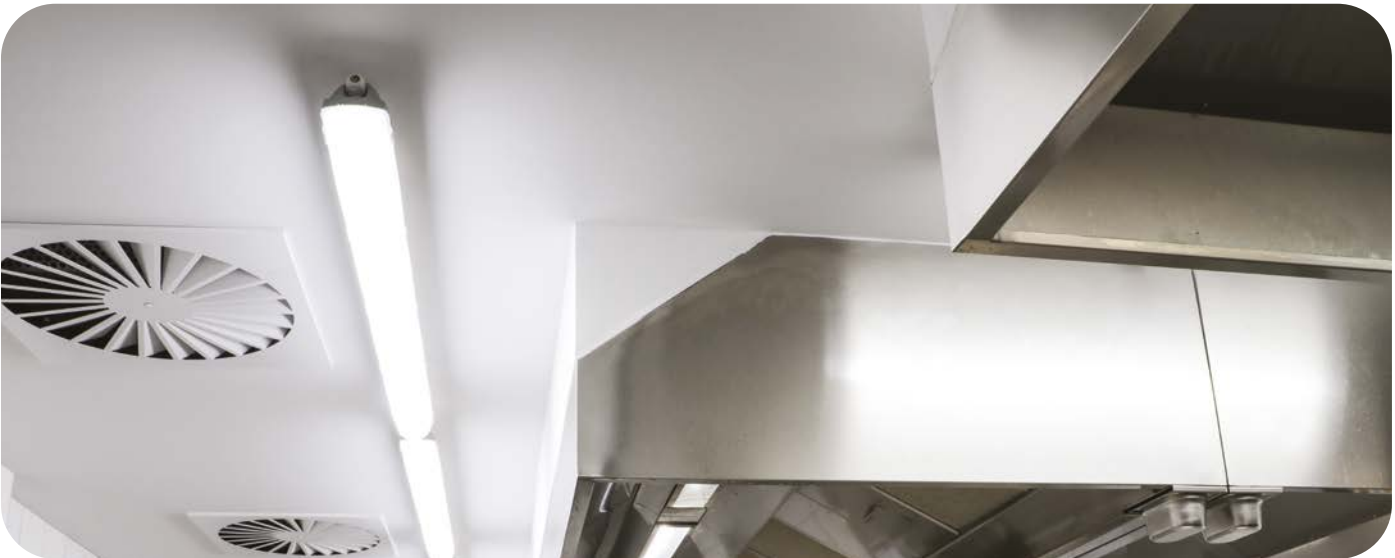
## STANDARD



MORE ABOUT  
THE INNOVA  
LUMINAIRE









## BENEFITS

- ✓ Professional solution
- ✓ Perfectly illuminated space
- ✓ Cost savings



### CLIPS

Stainless steel  
or polyamide



### CEILING BRACKET

Easy and fast  
assembly

Variable mounting pitch

### ABS

Acrylonitrile  
butadiene styrene

### BODY

## DURABILITY

For chemically  
harsh environments



## USE

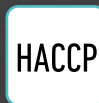
- chemical plants
- laboratories
- automotive repair shops
- printing works
- battery storage areas
- wastewater treatment plants
- industrial treatment plants
- production or storage facilities
- areas with high visual  
comfort requirements
- craft workshops
- output control workplaces

IP66  
IP69

Waterproof  
Dustproof



### CERTIFICATION:



### TECHNICAL DATA:

up to  
**180**  
lm/W

**5**  
YEARS  
WARRANTY

FROM TO  
**1150 lm 21830 lm**

**L90  
B10**

**IK10**

*\*representative data for the PROF LINE segment*

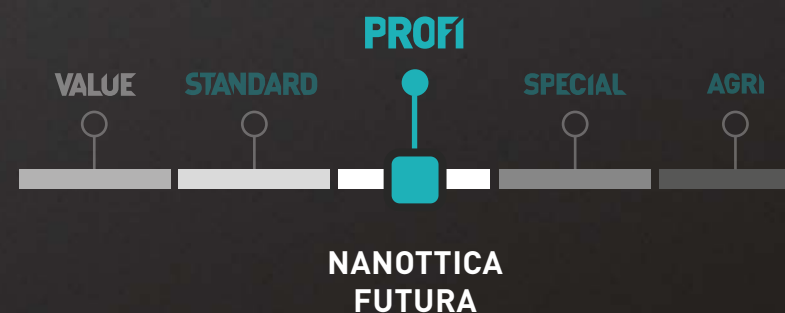
**-25°C TO +50°C**

### AC



### DIFFUSER

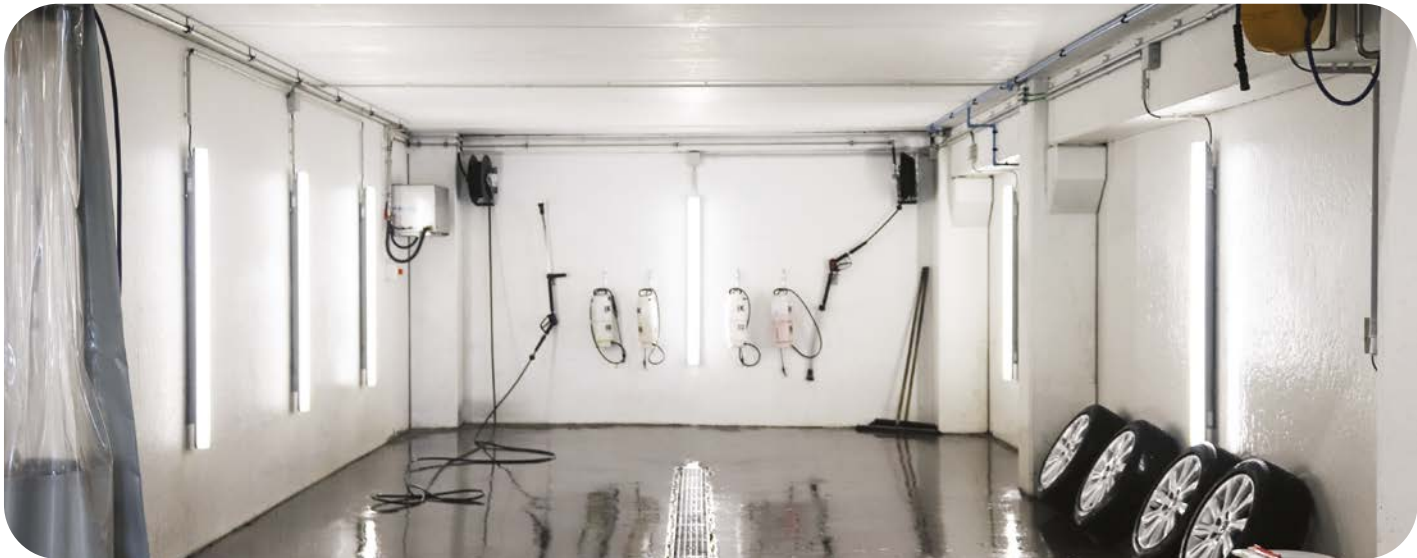
Unique  
NANO OPTICAL  
technology



MORE ABOUT THE  
NANOTTICA ABS  
LUMINAIRE









## BENEFITS

- ✓ Long-term use in extreme temperatures
- ✓ Quality solution
- ✓ Cost savings

## ASSEMBLY

Directly on the ceiling with screws



## CEILING BRACKET

Easy and fast assembly

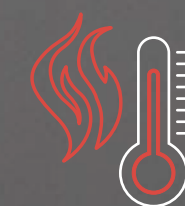
**Al**

Aluminium body

BODY

HIGH TEMPERATURE

Designed for extreme ambient



DIFFUSER

Heat-tempered safety satin glass

## USE

- teal mills
- foundries
- production of fire-fighting equipment
- greenhouses
- glassworks
- industrial furnaces and kilns
- rubber and plastic production plants
- bakeries and industrial kitchens
- cold stores



CLIPS

Stainless steel

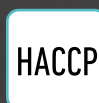
**IP66**

Waterproof  
Dustproof



**-40°C TO +75°C**

## CERTIFICATION:



## TECHNICAL DATA:

up to  
**164**  
lm/W

**5**  
YEARS  
WARRANTY

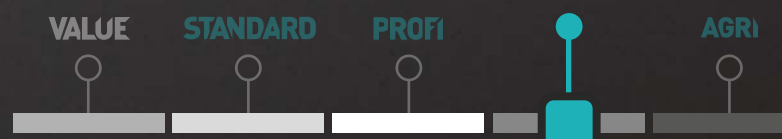
FROM TO  
**2220 lm 11570 lm**

**L80  
B10**

**IK10**

*\*representative data for the SPECIAL LINE segment*

## SPECIAL



NANOTTICA MAX  
PRIMA MAX  
FUTURA MAX  
FROST  
MIDDLE EAST TA 55  
ALUMAX LED MAX

MORE ABOUT THE  
ALUMAX LED MAX  
LUMINAIRE





## BENEFITS

- ✓ **Quality solution**
- ✓ **Cost savings**
- ✓ **Long-term use in extreme temperatures**

## COOLER

Intelligent  
luminaire cooling



## CLIPS

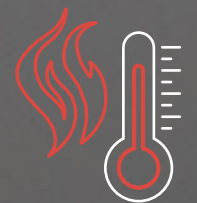
Stainless steel

**PC**  
polycarbonate

## BODY

## HIGH TEMPERATURE

Designed  
for extreme  
ambient



**PC**  
translucent  
polycarbonate

## DIFFUSER

## IP66

Waterproof  
Dustproof



**-40°C TO +70°C**

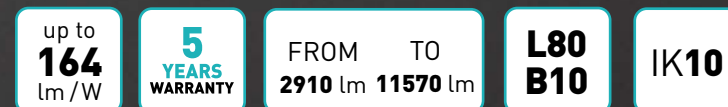
## USE

- steel mills
- foundries
- production of fire-fighting equipment
- greenhouses
- glassworks
- industrial furnaces and kilns
- rubber and plastic production plants
- bakeries and industrial kitchens
- cold stores

## CERTIFICATION:

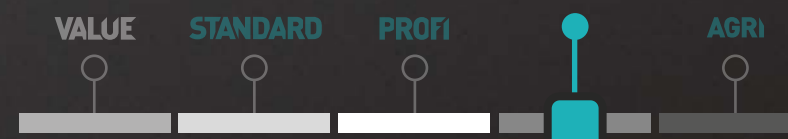


## TECHNICAL DATA:



*\*representative data for the SPECIAL LINE segment*

## SPECIAL



**NANOTTICA MAX  
PRIMA MAX  
FUTURA MAX  
FROST  
MIDDLE EAST TA 55  
ALUMAX LED MAX**

**MORE ABOUT THE  
FUTURA MAX  
LUMINAIRE**





## BENEFITS

- ✓ **Safe solution**
- ✓ **Cost savings**
- ✓ **Long-term use in chemically aggressive environments**

## NON-EXPLOSIVE

For environments with explosive gases, dusts and flammable vapours



category 3  
zone 2,22



CLIPS

Stainless steel

**PC**  
polycarbonate

BODY

CABLE  
GLAND

Special cable  
glands: screw-on  
M20X1,5, ATEX

**PC**  
translucent  
polycarbonate

DIFFUSER

## USE

- oil and gas refineries
- warehouses with flammable and gaseous materials
- military facilities
- paint shops
- production of fire-fighting equipment
- mining industry
- chemical plants and laboratories
- rubber and plastic production plants
- cosmetic and pharmaceutical production

**IP66**

Waterproof  
Dustproof



**-25°C TO +60°C**

## CERTIFICATION:



## TECHNICAL DATA:

up to  
**157**  
lm/W

**5**  
YEARS  
WARRANTY

FROM TO  
**1460 lm 17660 lm**

**L90  
B10**

**IK10**

*\*representative data for the SPECIAL LINE segment*

## SPECIAL

VALUE

STANDARD

PROFI

AGRI

**PRIMA LED EX  
TREX  
PERUN SLIM EX**

MORE ABOUT THE  
PRIMA LED EX  
LUMINAIRE







**NANOTTICA  
MAX**



**FUTURA  
MAX**



**FROST**



**MIDDLE EAST  
TA 55**



**PRIMA LED Ex  
ZONE 2, 22**



**TREX  
ZONE 1, 21  
and 2, 22**



**PERUN SLIM EX  
ZONE 2, 22**



## BENEFITS

- ✓ Long-term use in environments with ammonia
- ✓ Cost savings
- ✓ Quality



CEILING  
BRACKET

Easy and fast  
assembly

Variable mounting pitch

**ABS**

Acrylonitrile  
butadiene styrene

BODY

DURABILITY

For chemically  
harsh environments



CLIPS

Polyamide or  
stainless steel

IP66  
IP69

Waterproof  
Dustproof



-25°C TO +50°C

**ABS**

Translucent  
Acrylonitrile  
butadiene styrene

DIFFUSER

## USE

- farms
- stables and barns
- farm buildings
- warehouses for storing agricultural crops
- livestock production
- natural farming systems

### CERTIFICATION:



HACCP

CB  
test



DLG

EPD<sup>®</sup>

### TECHNICAL DATA:

up to  
**169**  
lm/W

**5**  
YEARS  
WARRANTY

FROM TO  
**1220 lm 20430 lm**

**L90  
B10**

**IK10**

\*representative data for the AGRI LINE segment

VALUE

STANDARD

PROFI

SPECIAL

AGRI

NANOTTICA ABS  
PRIMA ABS  
INNOVA ABS  
FUTURA ABS

MORE ABOUT  
THE PRIMA ABS  
LUMINAIRE





BENEFITS

- ✓ Calm, biorhythmically undisturbed cattle
- ✓ Increased milk production
- ✓ Sustainable animal prosperity

OPERATION

Cows are not disturbed while sleeping by the cowshed operators



SLEEP

Does not disturb the cows' biorhythm



BODY

PRODUCTION

Increases production by 6-10%



CLIPS

Polyamide or stainless steel

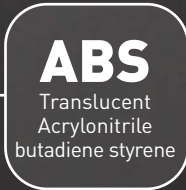


IP66  
IP69

Waterproof  
Dustproof



-25°C TO +45°C

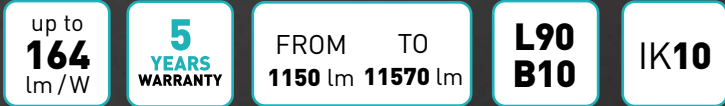


DIFFUSER

CERTIFICATION:



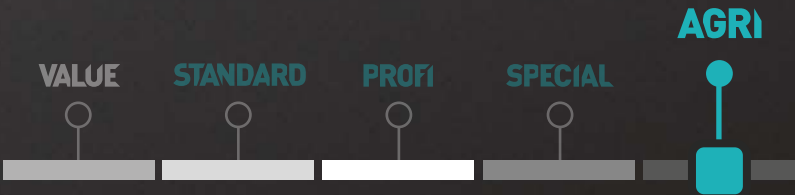
TECHNICAL DATA:



\*representative data for the AGRI LINE segment

USE

- breeding facilities focused on cattle breeding



PRIMA ABS RED  
INNOVA ABS RED  
FUTURA ABS RED

MORE ABOUT THE  
CONCEPT RED  
LUMINAIRE









BENEFITS

- ✓ Peaceful, non-aggressive poultry farming
- ✓ Increased egg production
- ✓ Sustainable animal prosperity

ANTI CONFLICT

Calms hens and prevents conflicts



GROWTH

Promotes chick growth



ABS

Acrylonitrile butadiene styrene

BODY

PRODUCTION

Increases production by 6-10%



CLIPS

Polyamide or stainless steel



IP66  
IP69

Waterproof  
Dustproof



-25°C TO +45°C

ABS

Translucent Acrylonitrile butadiene styrene

DIFFUSER

CERTIFICATION:



USE

- breeding facilities focused on poultry farming

TECHNICAL DATA:

up to  
**164**  
lm/W

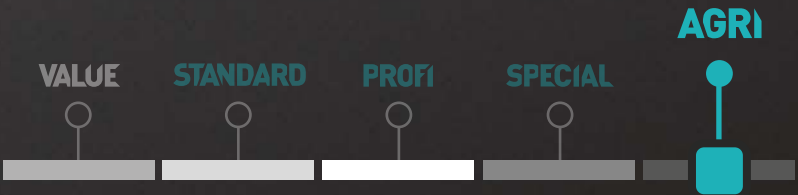
**5**  
YEARS  
WARRANTY

FROM TO  
**5690** lm **11570** lm

**L90**  
**B10**

**IK10**

*\*representative data for the AGRI LINE segment*



PRIMA ABS BLUE  
INNOVA ABS BLUE  
FUTURA ABS BLUE

MORE ABOUT THE  
CONCEPT BLUE  
LUMINAIRE









**TREVOS, a. s.**  
Nová Ves 34  
511 01 Turnov  
Czech Republic



11/2024



**Need more information?**

Do not hesitate to contact us,  
we will be happy to advise you.

 [trevos@trevos.cz](mailto:trevos@trevos.cz)

 [www.trevos.com](http://www.trevos.com)



FOLLOW US!