

PRIMA ABS



... dustproof, waterproof and chemically resistant, MultiLumen.

USE

In addition to indoor spaces, it is designed for agricultural buildings and other spaces with chemically aggressive environments due to ammonia fumes, lye fumes, alkali and hot water (hydrolysis).

Thanks to the MultiLumen function, the luminaire can be adjusted for changing lighting requirements without much effort.

The fitting is primarily intended for large **agricultural premises and industrial halls such as farms, stables, production plants and warehouses, car washes and laboratories** with no explosion hazard.

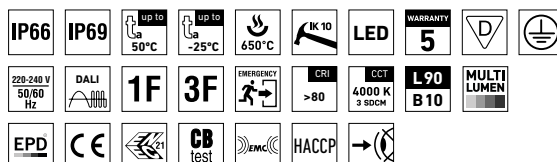
IP69-rated and HACCP-compliant, the fitting's design also makes it suitable for the food industry.

The fitting's base and diffuser are made of ABS resulting in their **exceptional chemical resistance**.

Emissions in the environment of use may reduce the usability of the plastics; for more information see page 407.

ADVANTAGES

- Light fitting protection **IP66 / IP69**
- High temperature resistance in a range from $t_a = -25^{\circ}\text{C}$ to **$t_a = 50^{\circ}\text{C}$**
- Lifetime: 50 000 hours / L90B10
- Lifetime: 100 000 hours / L80B10
- High **mechanical resistance IK10**
- **Variable suspension pitch**, optional installation of light fitting even on an existing structure on which the original light fittings were suspended
- **MultiLumen (ML)** function enables simple switching between up to four luminous fluxes via driver's DIP switch.
- Optional throughwiring (up to 7 wires inside the light fitting)
- Standard model CRI > 80: 4000 K
- On request CRI > 80: 3000 K, 5000 K, 6500 K
- CRI > 90: 3000 K, 4000 K, 5000 K, 6500 K
- Certificates: **EPD, ENEC, CB, HACCP**

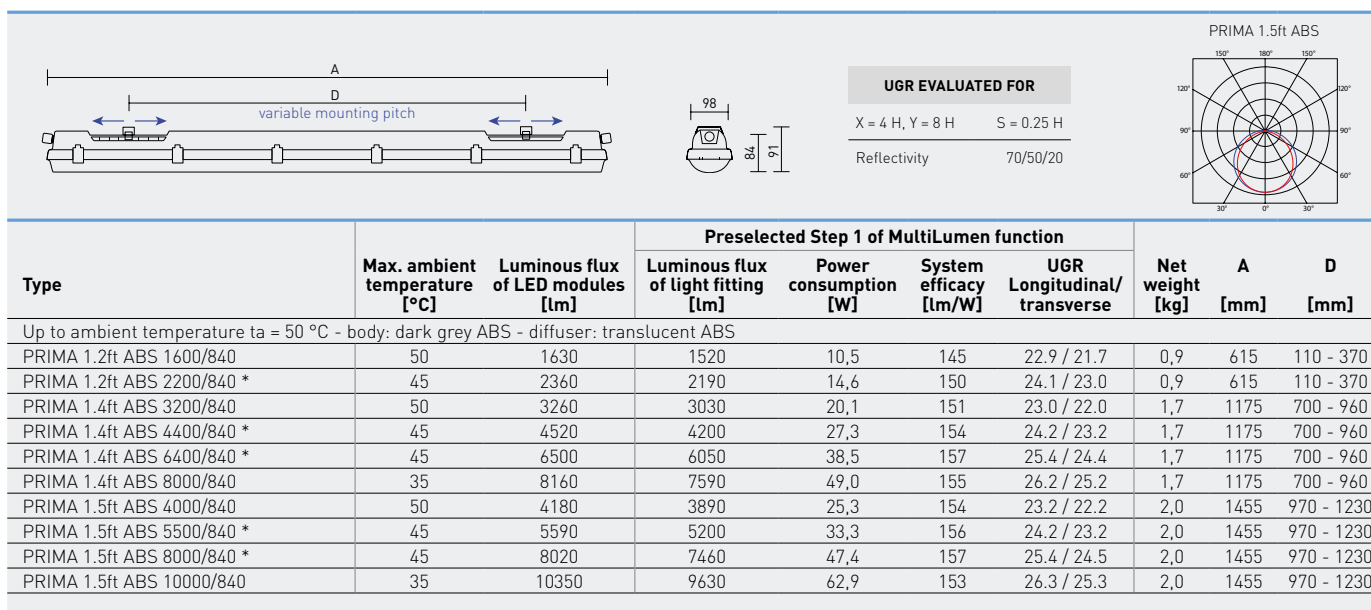


PRIMA ABS, ABSc



TECHNICAL DESCRIPTION

- Light fitting protection: **IP66 / IP69**
- Maximum ambient temperature: **ta = 50 °C**
- Maximum ambient temperature: ta = 0-40 °C for version with emergency back-up M3hAt
- Lifetime: 50 000 hours / L90B10
- Lifetime: 100 000 hours / L80B10
- Maximum light fitting efficiency: **163 lm/W**
- **CRI > 80: 4000 K** – standard
- CRI > 80: 3000 K, 5000 K, 6500 K - on request
- CRI > 90: 3000 K, 4000 K, 5000 K, 6500 K - on request
- **MultiLumen (ML):** luminous flux variable in up to 4 steps. In the standard version preset maximum luminous flux.
- MacAdam = 3 SDCM
- Diffuser: translucent ABS (high chemical resistance, UV stability)
- Body: dark grey ABS (high chemical resistance, UV stability)
- Reflector: steel sheet, white colour (RAL 9003)
- **Mounting clips:** stainless steel, stainless steel hooks included
- Clips: polyamide + 15 % glass fibre or stainless steel + polyamide
- Sealing: polyurethane (PUR), foamed body groove
- Cable glands: screwed PG 13.5
- Terminal block: screwless, three-pole (basic version), or screwed
- The values stated for power consumption and luminous flux are in a tolerance of ± 7.5 %



*) Also available with MultiLumen function:

Type	MultiLumen function							
	Step 2			Step 3			Step 4	
	Luminous flux of light fitting [lm]	Power consumption [W]	System efficacy [lm/W]	Luminous flux of light fitting [lm]	Power consumption [W]	System efficacy [lm/W]	Luminous flux of light fitting [lm]	Power consumption [W]
PRIMA 1.2ft ABS 2200/840 ML	1900	13,0	146	1600	11,0	145	1290	9,1
PRIMA 1.4ft ABS 4400/840 ML	3650	23,3	157	3080	19,5	158	2490	15,8
PRIMA 1.4ft ABS 6400/840 ML	5250	32,8	160	4440	27,4	162	3600	22,1
PRIMA 1.5ft ABS 5500/840 ML	4500	28,4	158	3790	23,6	161	3070	19,1
PRIMA 1.5ft ABS 8000/840 ML	6480	40,4	160	5480	33,6	163	4440	27,2

PRIMA ABS

Code	Type
105514	PRIMA 1.2ft ABS 1600/840
105515	PRIMA 1.2ft ABS 2200/840 ML
105517	PRIMA 1.4ft ABS 3200/840
105518	PRIMA 1.4ft ABS 4400/840 ML
105519	PRIMA 1.4ft ABS 6400/840 ML
106821	PRIMA 1.4ft ABS 8000/840
105521	PRIMA 1.5ft ABS 4000/840
105522	PRIMA 1.5ft ABS 5500/840 ML
105523	PRIMA 1.5ft ABS 8000/840 ML
106822	PRIMA 1.5ft ABS 10000/840

Non-dimmable driver - plastic clips

	1F	3F	M3hAt	3F M3hAt
105525	105536	x	x	
105526	105537	x	x	
105528	105539	108851	108859	
105529	105540	108852	108860	
105530	105541	108853	108861	
106823	106825	x	x	
105532	105543	108855	108863	
105533	105544	108856	108864	
105534	105545	108857	108865	
106824	106826	x	x	

PRIMA ABSc

Code	Type
105579	PRIMA 1.2ft ABSc 1600/840
105580	PRIMA 1.2ft ABSc 2200/840 ML
105582	PRIMA 1.4ft ABSc 3200/840
105583	PRIMA 1.4ft ABSc 4400/840 ML
105584	PRIMA 1.4ft ABSc 6400/840 ML
106827	PRIMA 1.4ft ABSc 8000/840
105586	PRIMA 1.5ft ABSc 4000/840
105587	PRIMA 1.5ft ABSc 5500/840 ML
105588	PRIMA 1.5ft ABSc 8000/840 ML
106828	PRIMA 1.5ft ABSc 10000/840

Non-dimmable driver - stainless clips (c)

1F	3F	M3hAt	3F M3hAt
105590	105601	x	x
105591	105602	x	x
105593	105604	108867	108875
105594	105605	108868	108876
105595	105606	108869	108877
106829	106831	x	x
105597	105608	108871	108879
105598	105609	108872	108880
105599	105610	108873	108881
106830	106832	x	x

PRIMA ABS DALI

Code	Type
105644	PRIMA 1.2ft ABS 1600/840 DALI
105645	PRIMA 1.2ft ABS 2200/840 DALI
105647	PRIMA 1.4ft ABS 3200/840 DALI
105648	PRIMA 1.4ft ABS 4400/840 DALI
105649	PRIMA 1.4ft ABS 6400/840 DALI
106833	PRIMA 1.4ft ABS 8000/840 DALI
105651	PRIMA 1.5ft ABS 4000/840 DALI
105652	PRIMA 1.5ft ABS 5500/840 DALI
105653	PRIMA 1.5ft ABS 8000/840 DALI
106834	PRIMA 1.5ft ABS 10000/840 DALI

Digital dimmable driver DALI - plastic clips

1F	3F	M3hAt	3F M3hAt
105655	x	x	x
105656	x	x	x
105658	105669	108883	105705
105659	105670	108884	105706
105660	105671	108885	105707
106835	106837	x	x
105662	105673	108887	105709
105663	105674	108888	105710
105664	105675	108889	105711
106836	106838	x	x

PRIMA ABSc DALI

Code	Type
105713	PRIMA 1.2ft ABSc 1600/840 DALI
105714	PRIMA 1.2ft ABSc 2200/840 DALI
105716	PRIMA 1.4ft ABSc 3200/840 DALI
105717	PRIMA 1.4ft ABSc 4400/840 DALI
105718	PRIMA 1.4ft ABSc 6400/840 DALI
106839	PRIMA 1.4ft ABSc 8000/840 DALI
105720	PRIMA 1.5ft ABSc 4000/840 DALI
105721	PRIMA 1.5ft ABSc 5500/840 DALI
105722	PRIMA 1.5ft ABSc 8000/840 DALI
106840	PRIMA 1.5ft ABSc 10000/840 DALI

Digital dimmable driver DALI - stainless clips (c)

1F	3F	M3hAt	3F M3hAt
105724	x	x	x
105725	x	x	x
105727	105738	108891	105774
105728	105739	108892	105775
105729	105740	108893	105776
106841	106843	x	x
105731	105742	108895	105778
105732	105743	108896	105779
105733	105744	108897	105780
106842	106844	x	x

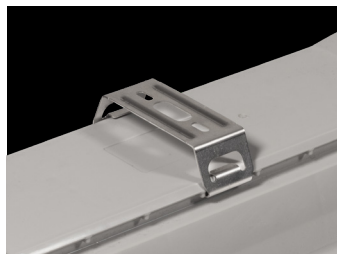
LEGEND

- 1F** - 1-phase 3 core through-wiring in the luminaire
3F - 3-phase 5 core through-wiring in the luminaire
M3hAt - emergency back-up source with 3 hour operating time for maintained emergency illumination with battery autotest
3F M3hAt - 3-phase 5 core through-wiring in the luminaire (L3 used for emergency unit unswitched power supply)

- DALI** - version with digital dimmable driver DALI
DALI 1F - 1-phase 5 core through-wiring in the luminaire
DALI 3F - 3-phase 7 core through-wiring in the luminaire
DALI 3F M3hAt - 3-phase 7 core through-wiring in the luminaire (L3 used for emergency unit unswitched power supply)

LIGHT FITTING ATTACHMENT

- a) Directly to a ceiling or a wall with the use of screws and stainless brackets
b) Suspension with the use of stainless hooks
c) Attachment with the use of side hangers to the wall - is not included in accessories



LIGHT FITTING DETAILED VIEW

PRIMA ABS

