

# NAOS SQUARE



... indoor, square, metal.

## USE

Advanced lamp with low profile of total height of 34 mm only.

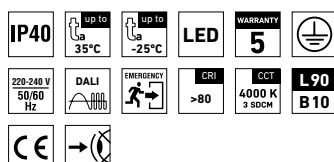
Body of the lamp is made of painted metal sheet and it is supplemented with acryl diffuser sandblasted on both sides.

The light fitting is suitable for offices, hallways, school interiors, libraries, lecture rooms, sanitary rooms, hospitals and passenger terminals.

## ADVANTAGES

- Light fitting protection **IP40**
- Maximum ambient temperature up to **t<sub>a</sub> = 35 °C**
- Lifetime: 50,000 hours / L90B10
- Diffuser: acryl (PMMA) sandblasted on both sides
- Body: steel sheet, white (RAL 9003) or silver (RAL 9006) colour
- Up to 45 % lower electricity consumption when compared to tubes T5
- In DALI version possibility of constant luminous flux for whole lifetime (CLO)

- Standard model - CRI > 80: 4000 K
- At request CRI > 80: 3000 K, 5000 K, 6500 K, CRI > 90: 3000 K, 4000 K, 5000 K, 6500 K
- It can be delivered in dimmable or emergency version
- Certification: ESČ

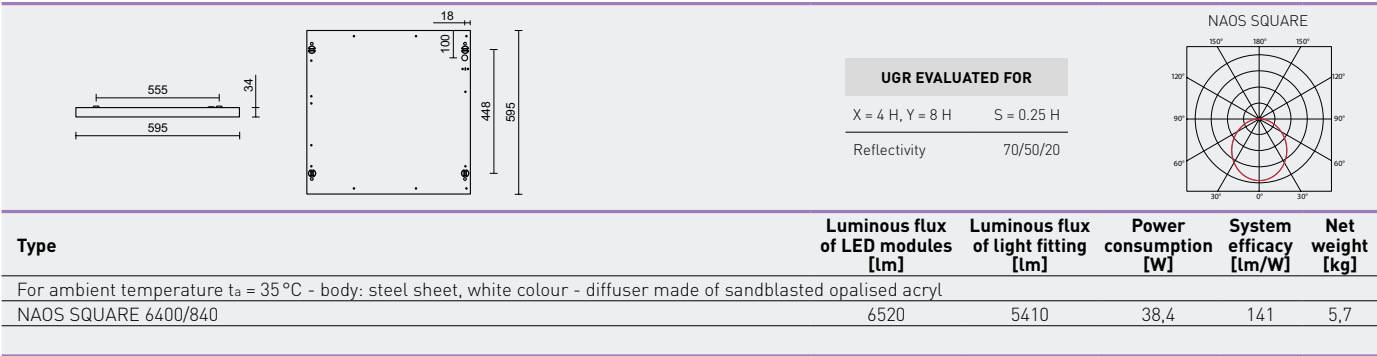


NAOS SQUARE



TECHNICAL DESCRIPTION

- Light fitting protection: IP40
- Maximum ambient temperature:  $t_a = 35^{\circ}\text{C}$ , Maximum ambient temperature:  $t_a = 0\text{--}35^{\circ}\text{C}$  (version with emergency back-up source M3hAt)
- Maximum system efficacy: 141 lm/W
- The watt and lumen values can vary by  $\pm 7,5\%$
- Standard model - CRI > 80: 4000 K
- MacAdam = 3 SDCM
- Lifetime: 50,000 hours / L90B10
- Diffuser: acryl (PMMA) sandblasted on both sides
- Body: steel sheet, white (RAL 9003) or silver (RAL 9006) colour
- Cable gland: rubber (SBS), white
- Terminal block: screwless, five-pole
- Securing of the cover: by the means of magnets
- Electric equipment: LED modules, current driver or current driver DALI



NAOS SQUARE

Code	Type
95720	NAOS SQUARE 6400/840

Diffuser made from sandblasted opalised acryl, white colour

M3hAt	DALI	DALI M3hAt
110058	95725	110056

NAOS SQUARE s

Code	Type
95760	NAOS SQUARE 6400/840 s

Diffuser made from sandblasted opalised acryl, silver colour (s)

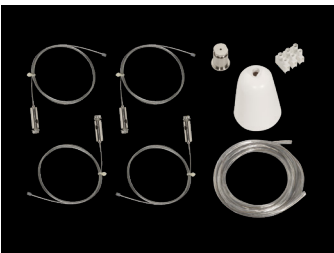
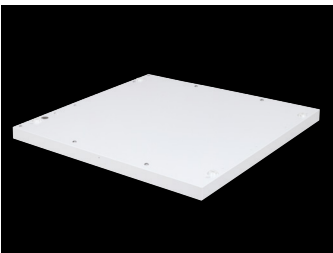
M3hAt	DALI	DALI M3hAt
110059	95765	110057

LEGEND

- s** – silver colour RAL 9006
- DALI** – version with electronic and digitally dimmed ballast module operated via DALI protocol
- M3hAt** – emergency back-up source with operating time of 3 hour (SA) for both permanent and emergency illumination with battery autotest

LIGHT FITTING ATTACHMENT

- a) Directly to a ceiling or a wall with the use of screws
- b) By suspending to a ceiling with the use of wire-cord suspensions
- c) Installation into 600 × 600 mm grid lower ceiling



LIGHT FITTING DETAILED VIEW  
NAOS SQUARE

