

NAOS SQUARE MPR



... indoor, square, metal, with low UGR.

USE

Advanced lamp **with low profile** of total height of **34 mm only**.

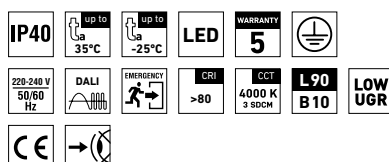
It is the luminaire with multi-layer micro pyramid optics (MPR) for light distribution without glare according to EN 12464-1 with **UGR <19**.

The light fitting is suitable for offices, hallways, school interiors, libraries, lecture rooms, sanitary rooms, hospitals and passenger terminals.

ADVANTAGES

- Light fitting protection **IP40**
- Maximum ambient temperature up to **t_a = 35 °C**
- Lifetime: 50,000 hours / L90B10
- Diffuser: multi-layer micro pyramid optics (MPR), **UGR <19**
- Body: steel sheet, white (RAL 9003) or silver (RAL 9006) colour
- Up to 45 % lower electricity consumption when compared to tubes T5
- In DALI version possibility of constant luminous flux for whole lifetime (CLO)

- Standard model - CRI > 80: 4000 K
- At request CRI > 80: 3000 K, 5000 K, 6500 K, CRI > 90: 3000 K, 4000 K, 5000 K, 6500 K
- It can be delivered in dimmable or emergency version
- Certification: ESČ

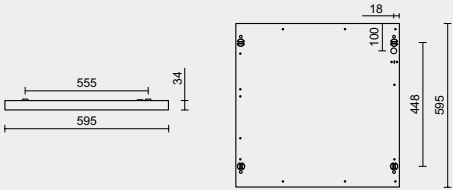
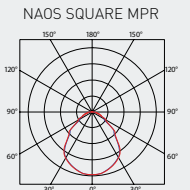


NAOS SQUARE MPR



TECHNICAL DESCRIPTION

- Light fitting protection: IP40
- Maximum ambient temperature: $t_a = 35^\circ\text{C}$, Maximum ambient temperature: $t_a = 0-35^\circ\text{C}$ (version with emergency back-up source M3hAt)
- Maximum system efficacy: 135 lm/W
- The watt and lumen values can vary by $\pm 7,5\%$
- Standard model - CRI > 80: 4000 K
- MacAdam = 3 SDCM
- Lifetime: 50,000 hours / L90B10
- Diffuser: multi-layer micropyramid optics (MPR), **UGR <19**
- Body: steel sheet, white (RAL 9003) or silver (RAL 9006) colour
- Cable gland: rubber (SBS), white
- Terminal block: screwless, five-pole
- Securing of the cover: by the means of magnets
- Electric equipment: LED modules, current driver or current driver DALI

	UGR EVALUATED FOR X = 4 H, Y = 8 H S = 0.25 H Reflectivity 70/50/20					
Type	Luminous flux of LED modules [lm]	Luminous flux of light fitting [lm]	Power consumption [W]	System efficacy [lm/W]	UGR Longitudinal/transverse	Net weight [kg]
For environment temperature $t_a = 35\text{ }^{\circ}\text{C}$ - body made of white steel sheet - diffuser made of multilayer micropyramid optics						
NAOS SQUARE MPR 5200/840	5230	4080	30,3	135	18.3 / 18.7	5,7

95810 NAOS SQUARE MPR 5200/840 = suitable replacement surface mounted or recessed fluorescent light fittings 4×18W a 4×14W

NAOS SQUARE MPR

Code	Type
95810	NAOS SQUARE MPR 5200/840

Diffuser with multilayer micropyramid optics, white colour

M3hAt	DALI	DALI M3hAt
110062	95815	110060

NAOS SQUARE MPR s

Code	Type
95850	NAOS SQUARE MPR 5200/840 s

Diffuser with multilayer micropyramid optics, silver colour (s)

M3hAt	DALI	DALI M3hAt
110063	95855	110061

LEGEND

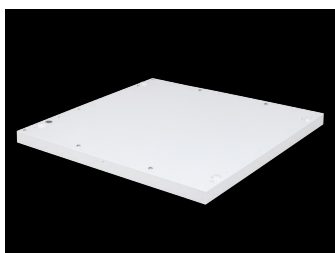
s – silver colour RAL 9006

DALI – version with electronic and digitally dimmed ballast module operated via DALI protocol

M3hAt – emergency back-up source with operating time of 3 hour (SA) for both permanent and emergency illumination with battery autotest

LIGHT FITTING ATTACHMENT

- Directly to a ceiling or a wall with the use of screws
- By suspending to a ceiling with the use of wire-cord suspensions
- Installation into 600 × 600 mm grid lower ceiling



LIGHT FITTING DETAILED VIEW NAOS SQUARE MPR

