

NAOS AS



... indoor, metal, asymmetrical.

USE

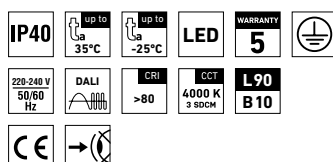
Advanced lamp with low profile of total height of 34 mm only.

Made of painted metal, the luminaire body is complemented by an asymmetrical diffuser made of acrylic.

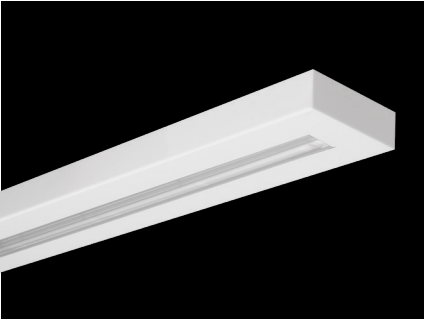
The fixture is a perfect choice for indoor areas, such as schools (including as a dedicated luminaire placed above the board to highlight the area), libraries, auditoriums and exhibition spaces.

ADVANTAGES

- Light fitting protection **IP40**
- Maximum ambient temperature up to **t_a = 35 °C**
- Lifetime: 50,000 hours / L90B10
- Diffuser: asymmetrical acrylic (PMMA)
- Body: steel sheet, white (RAL 9003) or silver (RAL 9006) colour
- Up to 45 % lower electricity consumption when compared to tubes T5
- In DALI version possibility of constant luminous flux for whole lifetime (CLO)
- Standard model - CRI > 80: 4000 K
- It can be delivered in dimmable version
- Certification: EŠC

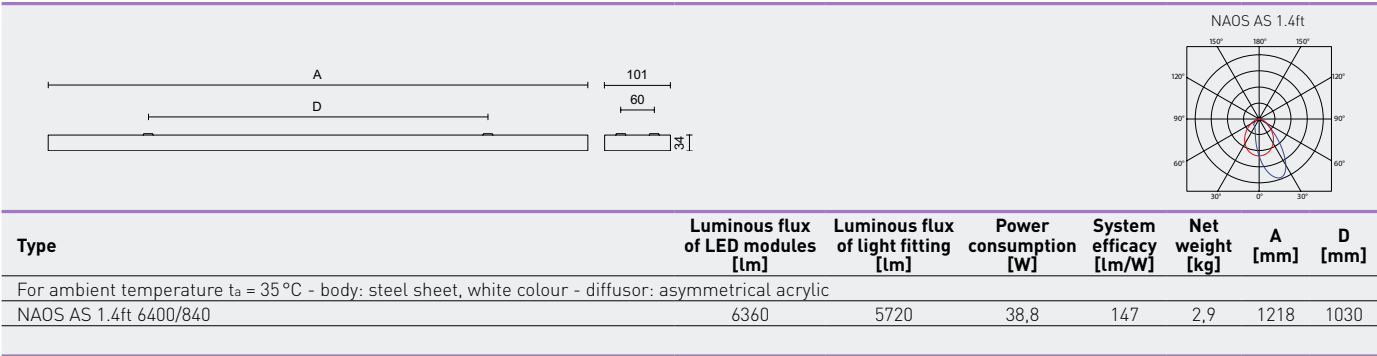


NAOS AS



TECHNICAL DESCRIPTION

- Light fitting protection: IP40
- Maximum ambient temperature: $t_a = 35^{\circ}\text{C}$
- Maximum system efficacy: 147 lm/W
- The watt and lumen values can vary by $\pm 7,5\%$
- Standard model - CRI > 80: 4000 K
- MacAdam = 3 SDCM
- Lifetime: 50,000 hours / L90B10
- Diffusor: asymmetrical acrylic (PMMA)
- Body: steel sheet, white (RAL 9003) or silver (RAL 9006) colour
- Cable gland: rubber (SBS), white
- Terminal block: screwless, five-pole
- Securing of the cover: by the means of magnets
- Electric equipment: LED modules, current driver or current driver DALI



NAOS AS

Code	Type
10192	NAOS 1.4ft AS 6400/840

Asymmetrical acrylic diffusor, white colour

DALI
10198

NAOS AS s

Code	Type
10455	NAOS 1.4ft AS 6400/840 s

Asymmetrical acrylic diffusor, silver colour [s]

DALI
10492

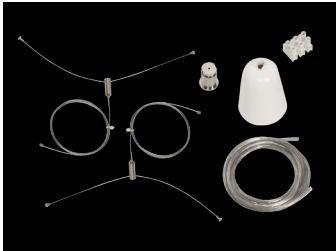
LEGEND

s – silver colour RAL 9006

DALI – version with electronic and digitally dimmed ballast module operated via DALI protocol

LIGHT FITTING ATTACHMENT

- a) Directly to a ceiling or a wall with the use of screws
b) By suspending to a ceiling with the use of wire-cord suspensions



LIGHT FITTING DETAILED VIEW

NAOS AS

