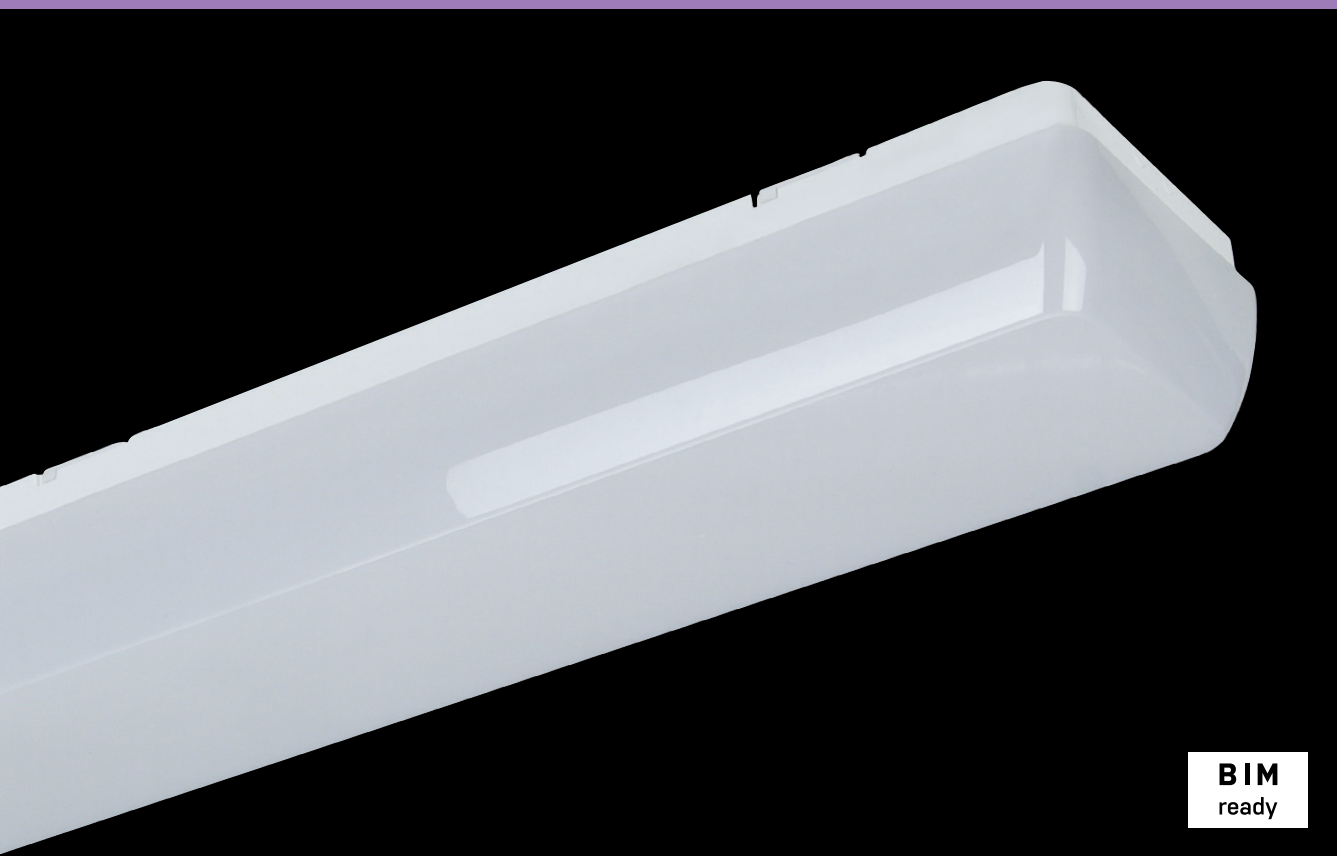


# LINEA



**BIM**  
ready

... indoor, surface-mounted, plastic, MultiLumen.

## USE

LINEA family is a perfect lighting solution of modern and technically functional illumination. It offers ceiling and wall-mounted luminaires with balanced shadowing and uniform light. Thanks to various sizes, individual premises as well as public buildings can be attractively illuminated.

**Thanks to the MultiLumen function**, the luminaire can be adjusted for changing lighting requirements without much effort.

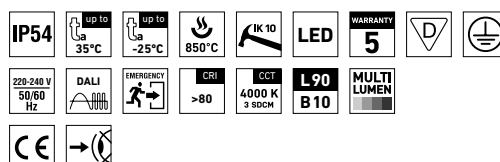
The Linea light fitting line can be used as a comprehensive solution for lighting of office buildings, schools, hospitals, libraries, as well as individual lighting of flat interiors, corridors, sanitary and welfare facilities.

Thanks to its high luminous efficiency and low electricity consumption it is a suitable replacement for light fittings with fluorescent tubes.

## ADVANTAGES

- Light fitting protection **IP54**
- Maximum ambient temperature up to **t<sub>a</sub> = 35 °C**
- Lifetime: 50,000 hours / L90B10
- Diffuser: translucent polycarbonate (PC) = high light transmission
- Body: white polycarbonate (PC) = high mechanical resistance
- Up to 45 % lower electricity consumption when compared to tubes T5
- In DALI version possibility of constant luminous flux for whole lifetime (CLO)

- **MultiLumen (ML)** function enables simple switching between up to four luminous fluxes via driver's DIP switch.
- Standard model - CRI > 80: 4000 K
- At request CRI > 80: 3000 K, 5000 K, 6500 K, CRI > 90: 3000 K, 4000 K, 5000 K, 6500 K
- It can be delivered in dimmable or emergency version

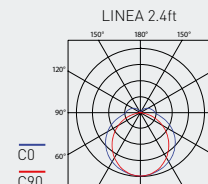
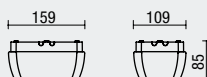
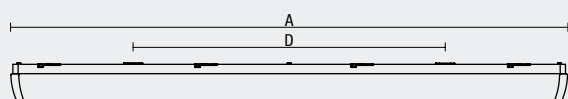


## LINEA



## TECHNICAL DESCRIPTION

- Light fitting protection: IP54
- Maximum ambient temperature:  $t_a = 35^\circ\text{C}$ , Maximum ambient temperature:  $t_a = 0-35^\circ\text{C}$  (version with emergency back-up source M3hAt)
- Maximum system efficacy: 146 lm/W
- The watt and lumen values can vary by  $\pm 7,5\%$
- Standard model - CRI > 80: 4000 K
- MacAdam = 3 SDCM
- Lifetime: 50,000 hours / L90B10
- Diffuser: translucent polycarbonate (PC), UV stable, impact-resistant
- Body: white polycarbonate (PC), UV stable, impact-resistant
- Reflector: steel sheet, white colour (RAL 9003)
- **MultiLumen (ML)**: luminous flux variable in up to 4 steps. In the standard version preset maximum luminous flux.
- Rotary cap: polyamide + 10 % glass fibre
- Sealing: polyurethane (PUR), foamed body groove
- Cable glands: rubber (SBS)
- Terminal block: screwless, three-pole (basic version)
- Electric equipment: LED modules, current driver or current driver DALI



Type	Luminous flux of LED modules [lm]	Preselected Step 1 of MultiLumen function			Net weight [kg]	A [mm]	D [mm]
		Luminous flux of light fitting [lm]	Power consumption [W]	System efficacy [lm/W]			
For ambient temperature ta = 35 °C - body: white polycarbonate - diffuser: translucent polycarbonate							
LINEA 1.4ft 3200/840 *	3260	2740	20,1	136	1,9	1160	650
LINEA 1.4ft 4400/840 *	4520	3800	27,3	139	1,9	1160	650
LINEA 2.4ft 6400/840 *	6520	5350	38,4	139	2,5	1160	650
LINEA 2.4ft 8800/840 *	8980	7360	52,8	139	2,5	1160	650

\*) Also available with MultiLumen function:

Type	MultiLumen function								
	Step 2			Step 3			Step 4		
	Luminous flux of light fitting [lm]	Power consumption [W]	System efficacy [lm/W]	Luminous flux of light fitting [lm]	Power consumption [W]	System efficacy [lm/W]	Luminous flux of light fitting [lm]	Power consumption [W]	System efficacy [lm/W]
LINEA 1.4ft 3200/840 ML	2370	17,3	137	2000	14,6	137	1620	11,7	138
LINEA 1.4ft 4400/840 ML	3290	23,3	141	2780	19,5	143	2250	15,8	142
LINEA 2.4ft 6400/840 ML	4630	32,9	141	3900	27,4	142	3170	22,0	144
LINEA 2.4ft 8800/840 ML	6390	44,9	142	5400	37,4	144	4380	30,1	146

## LINEA

Code	Type
63150	LINEA 1.4ft 3200/840 ML
63160	LINEA 1.4ft 4400/840 ML
63250	LINEA 2.4ft 6400/840 ML
63260	LINEA 2.4ft 8800/840 ML

## Non-dimmable driver

M3hAt	SNS
110129	110115
110130	110116
109909	63251
109910	63261

## LINEA DALI

Code	Type
63153	LINEA 1.4ft 3200/840 DALI
63163	LINEA 1.4ft 4400/840 DALI
63253	LINEA 2.4ft 6400/840 DALI
63263	LINEA 2.4ft 8800/840 DALI

## Digital dimmable driver DALI

DALI M3hAt	COR
110131	110117
110132	110118
109912	63258
109913	63268

## LEGEND

- M3hAt** - emergency back-up source with 3 hour operating time for maintained emergency illumination with battery autotest
- DALI** - version with digital dimmable driver DALI
- SNS** - version with microwave motion sensor
- COR** - version with digital dimmable driver DALI and set CORRIDOR function

## LIGHT FITTING ATTACHMENT AND ITS DETAILED VIEW

Directly to a ceiling or a wall with the use of screws

