

INNOVA ABS



BIM
ready



... dustproof, waterproof and chemically resistant.

USE

Closed and non-dismountable light fitting according to the standard ČSN EN 60598-1 part 4 intended for chemically challenging or agricultural premises with incidence of vapours like ammonia, lye, alkaline compounds and hot water (hydrolysis). The light fitting is suitable particularly for **agricultural and industrial buildings like farms, stables, production and warehouse premises, car wash units and laboratories** without explosion hazard. The structural design of the light fitting (IP69) allows even placement in food-processing industry - HACCP.

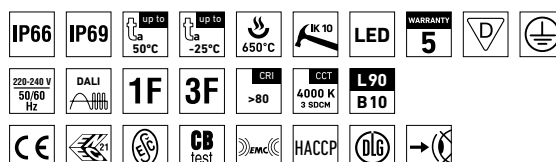
The light fitting resists dust, humidity and washing with spouting water up to 80°C. The body and the diffuser made of ABS material have high chemical resistance.

An **external terminal block** makes it easy and quick to connect the supply cable.

Emissions in the environment of use may reduce the usability of the plastics; for more information see page 407.

ADVANTAGES

- Light fitting protection **IP66 / IP69**
- High temperature resistance in a range from $t_a = -25^\circ\text{C}$ to $t_a = 50^\circ\text{C}$
- Lifetime: 50 000 hours / L90B10
- Lifetime: 100 000 hours / L80B10
- High chemical resistance
- **Variable suspension pitch**; optional installation of light fitting even on an existing structure on which the original light fittings were suspended
- **External terminal block makes it easy to connect the supply cable**
- Optional arrangement of light fittings in line without gaps
- **Fully automatic 100% control of functionality and tightness (leak test) during production**
- Easy cleaning and maintenance without need of replacing the light sources
- Eliminated risk of mechanical and electrostatic damage to LED chips
- Optional throughwiring (up to 5 wires inside the light fitting)
- Optional delivery in dimmable version
- Certificates: **ESĚ, ENEC, CB, DLG, HACCP**

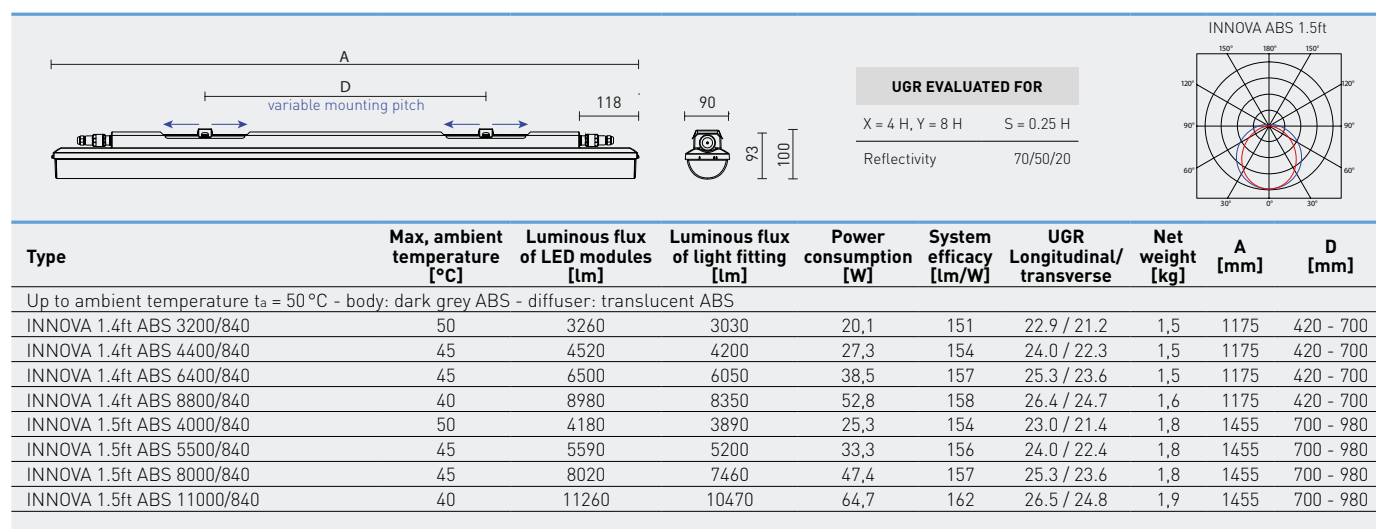


INNOVA ABS



TECHNICAL DESCRIPTION

- Light fitting protection: **IP66 / IP69**
- Maximum ambient temperature: **t_a = 50 °C**
- Lifetime: 50 000 hours / L90B10
- Lifetime: 100 000 hours / L80B10
- Maximum light fitting efficiency: 162 lm/W
- CRI > 80: 4000 K – standard
- CRI > 80: 3000 K, 5000 K, 6500 K – on request
- CRI > 90: 3000 K, 4000 K, 5000 K, 6500 K – on request
- MacAdam = 3 SDCM
- Diffuser: translucent ABS (high chemical resistance, UV stability)
- Body: dark grey ABS (high chemical resistance, UV stability)
- Snap-in mounting clips: stainless steel
- Ventilation membrane in the base eliminating vacuum and condensate build-up
- 3 or 5-pole **external terminal block**, conductor cross-sectional area: 1.5 or 2.5 mm²
- Fittings may be **lined with zero distance** between them
- Optional constant luminous flux (CLO) in DALI version
- Electric equipment: LED modules, fixed output driver or DALI driver
- The package includes: stainless hooks and stainless brackets
- The values stated for power consumption and luminous flux are in a tolerance of ± 7,5 %



INNOVA 1.4ft ABS 3200/840 = suitable replacement for tube light fitting PRIMA 136 ABS – 1 × 36 W
 INNOVA 1.4ft ABS 6400/840 = suitable replacement for tube light fitting PRIMA 236 ABS – 2 × 36 W
 INNOVA 1.5ft ABS 4000/840 = suitable replacement for tube light fitting PRIMA 158 ABS – 1 × 58 W
 INNOVA 1.5ft ABS 8000/840 = suitable replacement for tube light fitting PRIMA 258 ABS – 2 × 58 W

INNOVA ABS

Diffuser from translucent ABS

Type	1x3P	1x5P	DALI 1x5P	2x3P	2x5P	DALI 2x5P
INNOVA 1.4ft ABS 3200/840	31624	31632	31640	31648	31656	31664
INNOVA 1.4ft ABS 4400/840	31625	31633	31641	31649	31657	31665
INNOVA 1.4ft ABS 6400/840	31626	31634	31642	31650	31658	31666
INNOVA 1.4ft ABS 8800/840	31627	31635	31643	31651	31659	31667
INNOVA 1.5ft ABS 4000/840	31628	31636	31644	31652	31660	31668
INNOVA 1.5ft ABS 5500/840	31629	31637	31645	31653	31661	31669
INNOVA 1.5ft ABS 8000/840	31630	31638	31646	31654	31662	31670
INNOVA 1.5ft ABS 11000/840	31631	31639	31647	31655	31663	31671

LEGEND

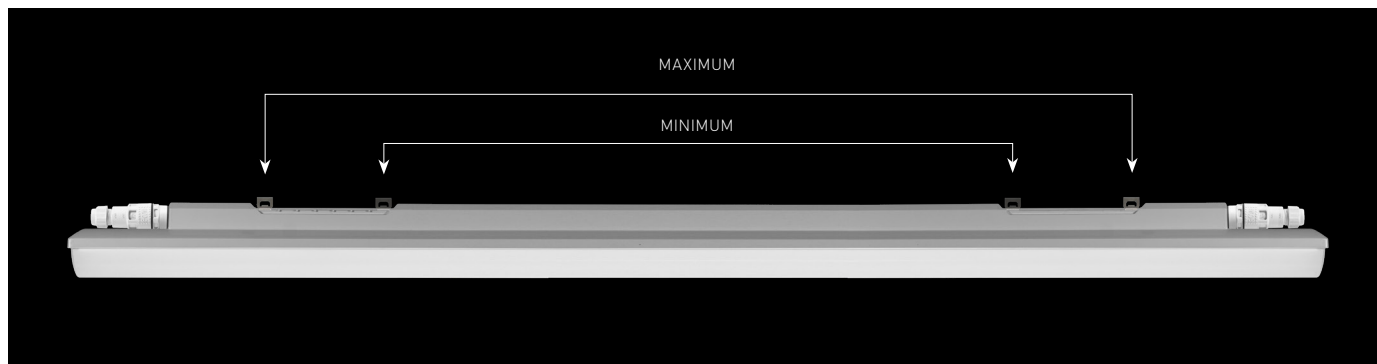
- 1x3P** - a version featuring a non-dimmable ballast and a single 3-pole external terminal block
1x5P - a version featuring a non-dimmable ballast and a single 5-pole external terminal block
DALI 1x5P - a version featuring a digitally dimmable ballast and a single 5-pole external terminal block
- 2x3P** - a version featuring a non-dimmable ballast, two 3-pole external terminal blocks and 3-wire connecting cables (1F), for continuous row installation
2x5P - a version featuring a non-dimmable ballast, two 5-pole external terminal blocks and 5-wire connecting cables (3F), for continuous row installation
DALI 2x5P - a version featuring a digitally dimmable ballast, two 5-pole external terminal blocks and 5-wire connecting cables (DALI 1F), for continuous row installation

LIGHT FITTING ATTACHMENT

- a) Directly to a ceiling or a wall with the use of screws and stainless brackets
- b) Suspension with the use of stainless hooks
- c) Attachment with the use of side hangers to the wall - is not included in accessories



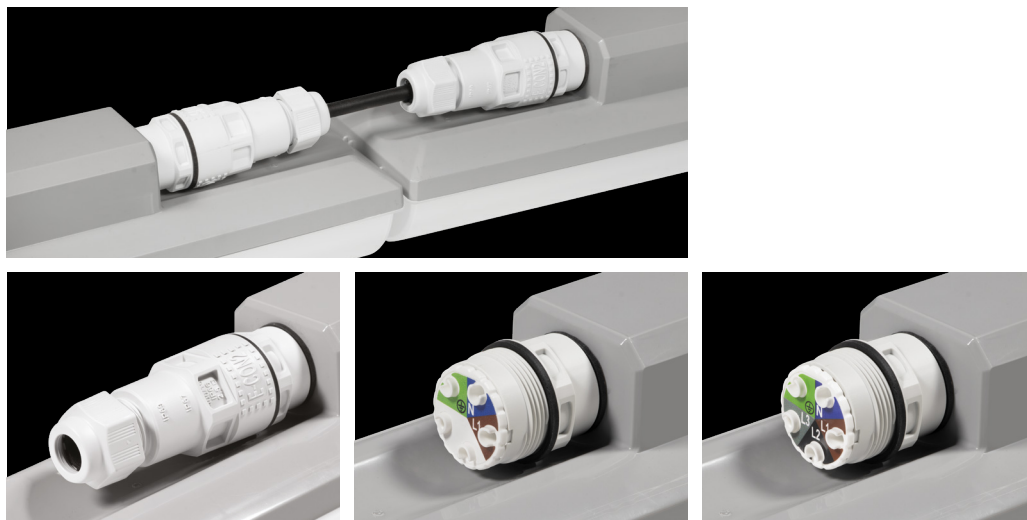
VARIABLE INSTALLATION PITCH



LIGHT FITTING INTERCONNECTION

An external terminal block is used to ensure the supply cable can easily and quickly be connected with no need to open the light fixture.

Interconnection of light fittings without spacing



LIGHT FITTING DETAILED VIEW

INNOVA ABS

