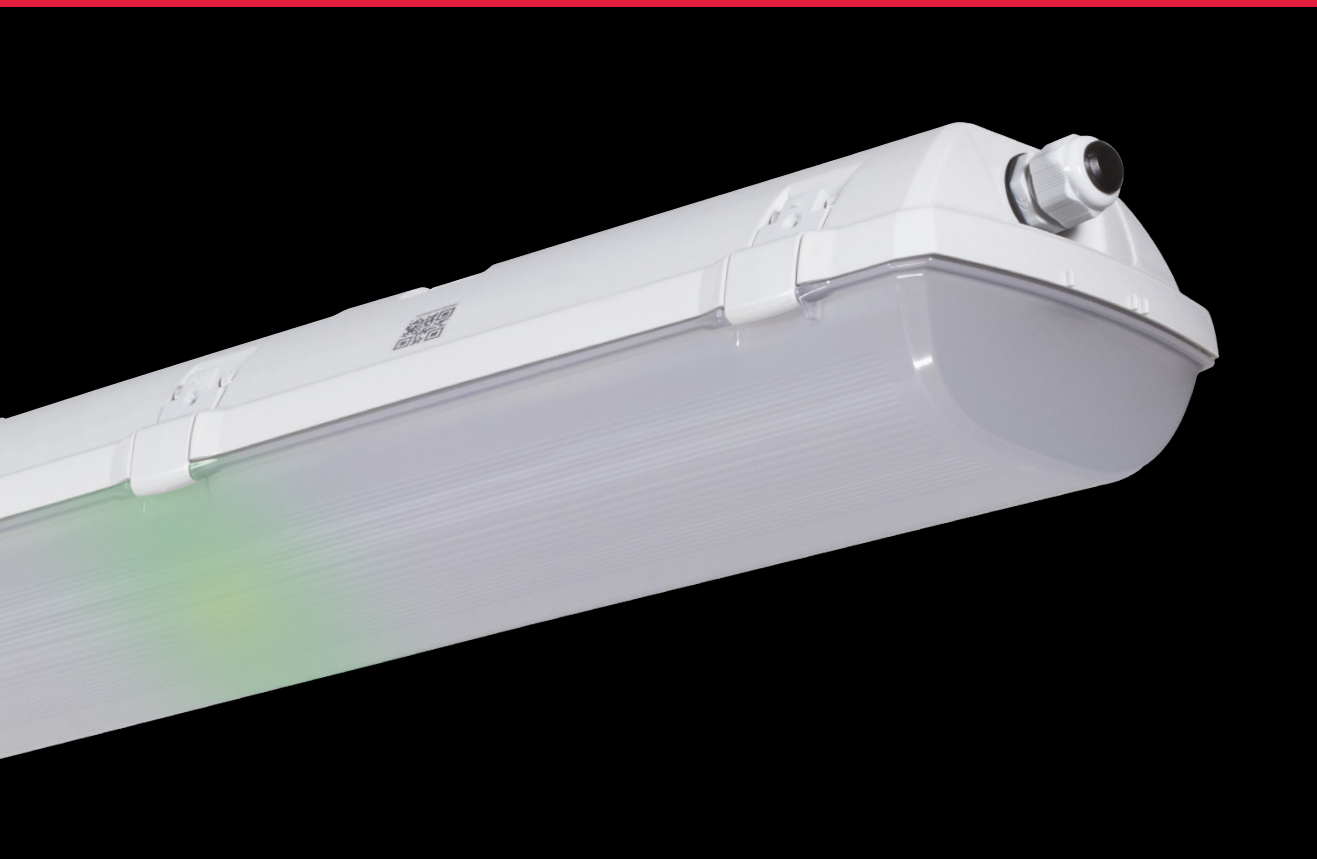


FUTURA NM



... emergency.

USE

Non-maintained emergency luminaire for escape routes, available for use in high ambient temperature, $t_a = 50^\circ\text{C}$, is intended by its function and shape primarily for being in a set with Futura and Innova light fittings.

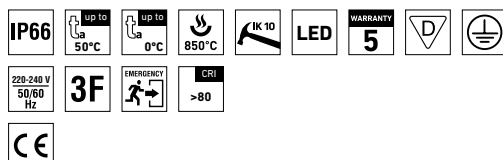
It is recommended for escape routes of interior industrial rooms, storage halls, sports premises, agricultural buildings and laboratories without hazard of explosion of gases, dusts and flammable vapours.

It is resistant to dust, moisture and spouting water. The body and the diffuser made of polycarbonate (PC) have increased resistance against deformation and impact.

Atmosphere emissions must be considered, as they may reduce the usability of plastics at installation in aggressive environment, see p. 407.

ADVANTAGES

- Light fitting protection **IP66**
- High thermal resistance ranging **from $t_a = 0^\circ\text{C}$ to $t_a = 50^\circ\text{C}$**
- LED module lifetime: 50 000 hours / L80B20
- Luminous flux of the light fitting: **440 lm**
- Diffuser: translucent polycarbonate (PC) = high mechanical resistance
- Body: grey polycarbonate (PC) = high mechanical resistance
- Emergency module **3h** with battery autotest
- Optional selection of EM kit with battery autotest
- Integrated diode for indication of correct operation
- Battery **LiFePO₄**
- Low energy consumption in StandBy mode

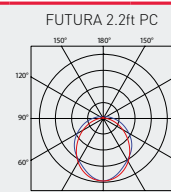
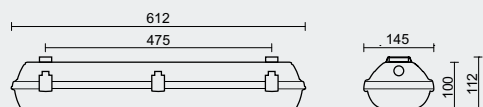


FUTURA PC, PCc



TECHNICAL DESCRIPTION

- Light fitting protection: **IP66**
- Maximum ambient temperature: **t_a = 50 °C**
- LED module lifetime: 50 000 hours / L80B20
- Luminous flux of the light fitting: **440 lm**
- Maximum light fitting efficiency: 133 lm/W
- **CRI > 80: 4000 K**
- MacAdam = 3 SDCM
- Diffuser: translucent PC (high mechanical resistance, UV stability)
- Body: grey PC (high mechanical resistance, UV stability)
- Reflector: white steel sheet (RAL 9003)
- Clips: polyamide + 15 % glass fibre or stainless steel + polyamide
- Sealing: polyurethane (PUR), foam-filled body groove
- Light fitting connection: **cable gland PG 13,5 / 16**
- Distance holder: polyamide + 10 % glass fibre
- Electric equipment:
EM kit including LiFePO₄ battery with autotest, LED module
- The package includes: stainless hooks and stainless brackets
- 2-year warranty for battery and EM kit (unit + LED module)
- The above stated values of power consumption and luminous flux are within a tolerance of ± 7,5 %



Type	Autonomy [hrs]	Luminous flux of light fitting [lm]	Power in emergency mode [W]	Light fitting efficiency [lm/W]	Battery type	Power in standby mode [W]	Charging time [hrs]	Power in charging mode [W]	Net weight [kg]
Non-maintained emergency luminaire with autotest									
FUTURA 2.2ft PC NM3hAt	3	440	3,3	133	LiFePO ₄	0,7	12	3,5	1,4

FUTURA PC with cable glands	Non-maintained emergency luminaire with autotest - cable glands PG 13,5 / 16 - plastic clips								
Type	NM3hAt				3F NM3hAt				
FUTURA 2.2ft PC ...	62423				62424				

FUTURA PCc with cable glands	Non-maintained emergency luminaire with autotest - cable glands PG 13,5 / 16 - stainless clips (c)								
Type	NM3hAt				3F NM3hAt				
FUTURA 2.2ft PCc ...	62443				62444				

LEGEND

- NM3hAt** – non-maintained emergency luminaire, operation time 3 hours, with battery autotest
- 3F NM3hAt** – non-maintained emergency luminaire, operation time 3 hours, with battery autotest, 5-wire throughwiring (3F)

The module signaling is listed in the assembly instructions attached to the luminaire and available for download at www.trevos.eu.

LIGHT FITTING ATTACHMENT

- a) Directly to a ceiling or a wall with the use of screws and stainless brackets
- b) Suspension with the use of stainless hooks



LIGHT FITTING DETAILED VIEW

FUTURA PC

