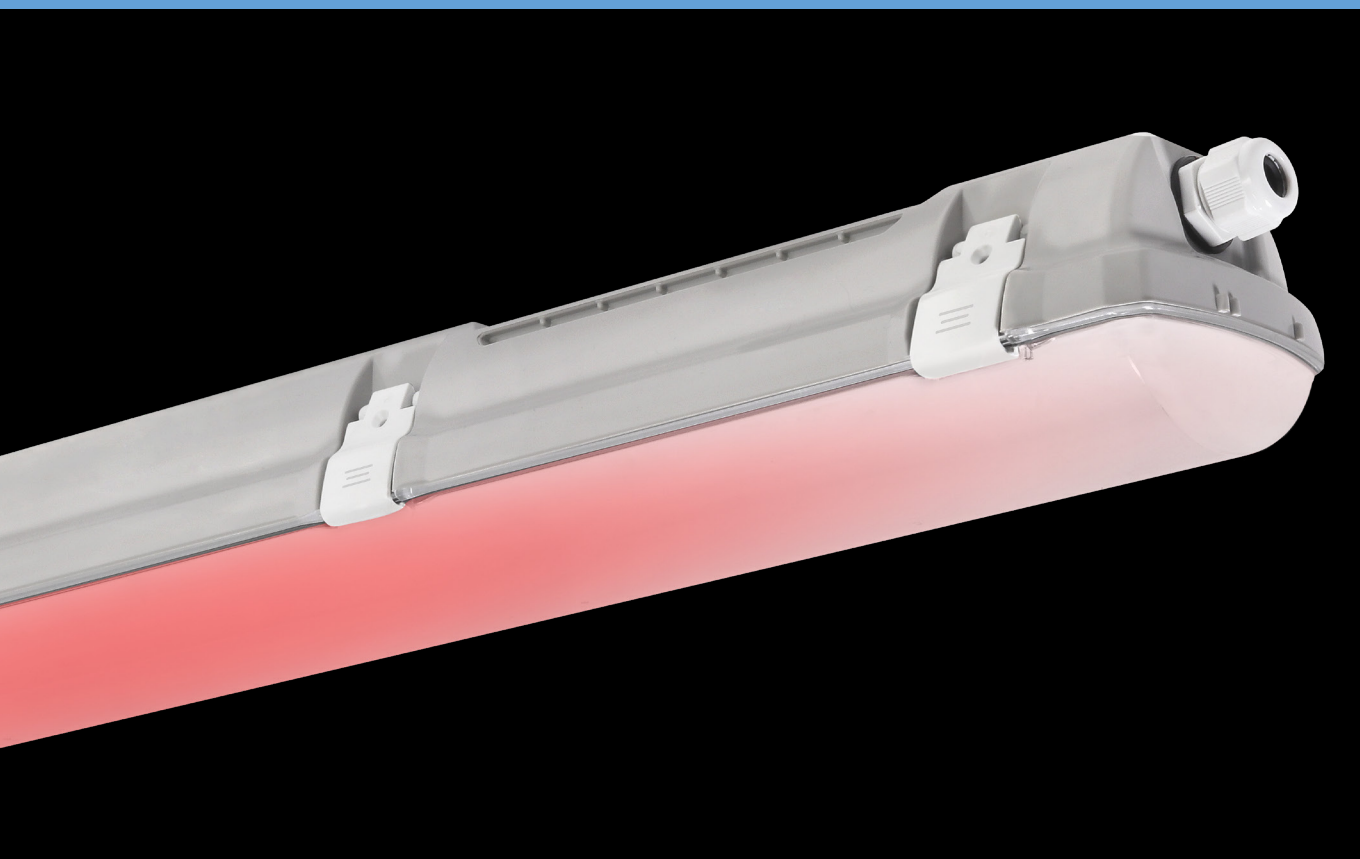


# CONCEPT RED



... for cows in the barns, chemically resistant.

## USE

Cows barely detect a red light and therefore it is a perfect solution for illumination of barns when workers have to work with the animals during a time of the day when the cows have night. We know that cows need eight hours a day of darkness to be able to rest well. This solution saves you money and allows you to go on your rounds or carry out work without disturbing the cows.

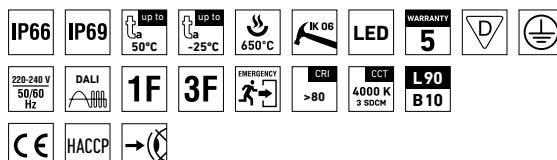
It can be integrated into our PRIMA, INNOVA and FUTURA lighting.

The light fixtures withstand exposure to chemically aggressive environments (ammonia in the air) typical of livestock farms.

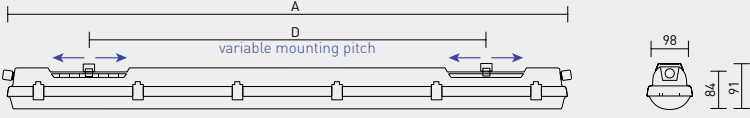
The body made of ABS and the diffuser made of AC have increased chemical resistance.

In addition to being protected against dust and humidity (IP66), the fixtures boast excellent thermal resistance, withstanding temperatures up to 50 °C.

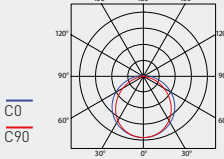
IP69-rated, our PRIMA and INNOVA-range fittings may be washed using hot water (up to 80 °C).



PRIMA ABS RED

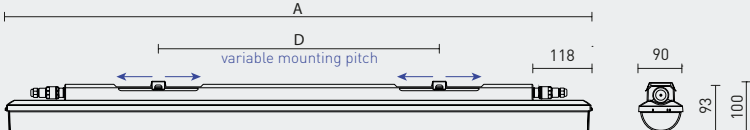


PRIMA 1.5ft ABS RED

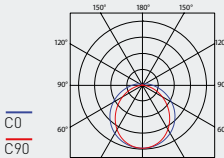


Code	Type	Max. ambient temperature [°C]	Luminous flux of LED modules [lm]	Luminous flux of light fitting [lm]	Power consumption [W]	System efficacy [lm/W]	Net weight [kg]	A [mm]	D [mm]
EXAMPLE									
107002	PRIMA 1.4ft ABS 6400/840 RED	45	6500 / 600	6050 / 530	38,5 / 12	157 / 44	1,7	1175	700 - 960
107003	PRIMA 1.5ft ABS 8000/840 RED	45	8020 / 600	7460 / 530	47,4 / 12	157 / 44	2,0	1455	970 - 1230

INNOVA ABS RED

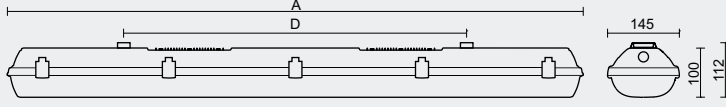


INNOVA 1.5ft ABS RED

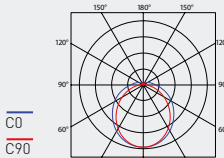


Code	Type	Max. ambient temperature [°C]	Luminous flux of LED modules [lm]	Luminous flux of light fitting [lm]	Power consumption [W]	System efficacy [lm/W]	Net weight [kg]	A [mm]	D [mm]
EXAMPLE									
107008	INNOVA 1.4ft ABS 6400/840 RED	45	6500 / 600	6050 / 530	38,5 / 12	157 / 44	1,5	1175	420 - 700
107009	INNOVA 1.5ft ABS 8000/840 RED	45	8020 / 600	7460 / 530	47,4 / 12	157 / 44	1,8	1455	700 - 980

FUTURA ABS RED RED



FUTURA 2.5ft ABS RED



Code	Type	Max. ambient temperature [°C]	Luminous flux of LED modules [lm]	Luminous flux of light fitting [lm]	Power consumption [W]	System efficacy [lm/W]	Net weight [kg]	A [mm]	D [mm]
EXAMPLE									
107014	FUTURA 2.4ft ABS 8800/840 RED	45	8980 / 600	7900 / 530	52,8 / 12	150 / 44	2,45	1172	700
107015	FUTURA 2.5ft ABS 11000/840 RED	45	11260 / 600	9910 / 530	64,7 / 12	153 / 44	2,95	1452	940

LIGHT FITTING DETAILED VIEW  
CONCEPT RED

