

# NANOTTICA VP ABS



... for outdoor sheltered spaces, ceiling height from 3.5 to 8 m, chemically resistant.

**USE**

The fixture boasts a **low unified glare rating with UGR values** its patented nanooptics. This ensures eye comfort, **high visual performance and workplace safety**, which indirectly **translates into higher productivity**.

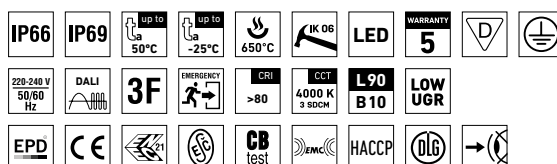
The fitting's **standard beam angle** makes it a great choice for premises with an optimum fitting installation height of **3.5 to 8 m**.

It is intended to be installed **in sheltered outdoor spaces**. It features a ventilation membrane that equalizes pressures while blocking water and contaminants that build up inside of the fitting as a result of temperature fluctuations. The fitting is highly recommended for agricultural buildings and other spaces with chemically aggressive environments due to ammonia fumes, lye fumes, alkali, hot water (hydrolysis) and oils. The product is primarily intended for **agricultural buildings and industrial halls such as farms, stables, production plants and warehouses, and spaces with permanently high humidity (such as car washes and tunnels)**. **Additionally, it is a perfect choice for the tropical zone and coastal areas.** IP69-rated and HACCP-compliant, the fitting's design also makes it a great choice for the food industry.

The fitting's base is made of ABS and diffuser of AC, resulting in their **exceptional chemical resistance**. Emissions in the environment of use may reduce the usability of the plastics; for more information see page 407.

## ADVANTAGES

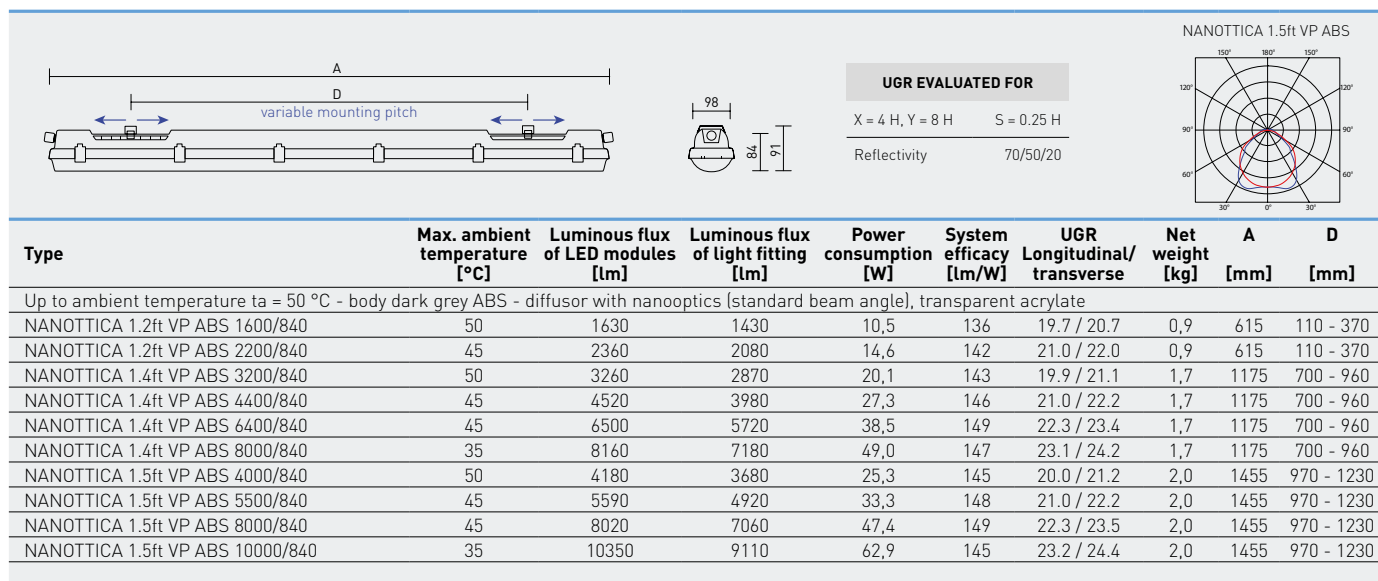
- Patented optics ensures absolute control over light beam distribution
- Low **UGR ranging from 19,7 to 24,4**
- Light fitting protection **IP66 / IP69**
- High temperature resistance in a range from  $t_a = -25^{\circ}\text{C}$  to  **$t_a = 50^{\circ}\text{C}$**
- Lifetime: 50 000 hours / L90B10
- Lifetime: 100 000 hours / L80B10
- High **chemical resistance**
- **Variable suspension pitch**, optional installation of light fitting even on an existing structure on which the original light fittings were suspended
- Optional throughwiring (up to 7 wires inside the light fitting)
- Standard model CRI > 80: 4000 K
- On request CRI > 80: 3000 K, 5000 K, 6500 K
- CRI > 90: 3000 K, 4000 K, 5000 K, 6500 K
- Optional delivery in dimmable version
- Certificates: **EPD, EŠČ, ENEC, CB, DLG, HACCP**



NANOTTICA VP ABS, ABS<sub>c</sub>

## TECHNICAL DESCRIPTION

- Light fitting protection: **IP66 / IP69**
- Maximum ambient temperature: **ta = 50 °C**
- Maximum ambient temperature: ta = 0-40 °C for version with emergency back-up M3hAt
- Lifetime: 50 000 hours / L90B10
- Lifetime: 100 000 hours / L80B10
- Maximum light fitting efficiency: **149 lm/W**
- **UGR ranging from 19,7 to 24,4**
- Optimum luminaire installation height **from 3.5 to 8 m**
- **CRI > 80: 4000 K** – standard
- CRI > 80: 3000 K, 5000 K, 6500 K - on request
- CRI > 90: 3000 K, 4000 K, 5000 K, 6500 K - on request
- MacAdam = 3 SDCM
- Diffuser: transparent AC with nanooptics (high chemical resistance, UV stability)
- Body: dark grey ABS (high chemical resistance, UV stability)
- **A ventilation membrane** in the base equalizes pressures while blocking water and contaminants
- Reflector: steel sheet, white colour (RAL 9003)
- **Mounting clips:** stainless steel, stainless steel hooks included
- Clips: polyamide + 15 % glass fibre or stainless steel + polyamide
- Sealing: polyurethane (PUR), foamed body groove
- Cable glands: screwed PG 13.5
- Terminal block: screwless, three-pole (basic version), or screwed
- The values stated for power consumption and luminous flux are in a tolerance of ± 7.5 %



## NANOTTICA VP ABS

Code	Type
101370	NANOTTICA 1.2ft VP ABS 1600/840
101371	NANOTTICA 1.2ft VP ABS 2200/840
101373	NANOTTICA 1.4ft VP ABS 3200/840
101374	NANOTTICA 1.4ft VP ABS 4400/840
101375	NANOTTICA 1.4ft VP ABS 6400/840
110269	NANOTTICA 1.4ft VP ABS 8000/840
101377	NANOTTICA 1.5ft VP ABS 4000/840
101378	NANOTTICA 1.5ft VP ABS 5500/840
101379	NANOTTICA 1.5ft VP ABS 8000/840
110270	NANOTTICA 1.5ft VP ABS 10000/840

Non-dimmable driver - plastic clips

3F	M3hAt	3F M3hAt
101381	x	x
101382	x	x
101384	108315	108323
101385	108316	108324
101386	108317	108325
110271	x	x
101388	108319	108327
101389	108320	108328
101390	108321	108329
110272	x	x

NANOTTICA VP ABS<sub>c</sub>

Code	Type
101408	NANOTTICA 1.2ft VP ABS <sub>c</sub> 1600/840
101409	NANOTTICA 1.2ft VP ABS <sub>c</sub> 2200/840
101411	NANOTTICA 1.4ft VP ABS <sub>c</sub> 3200/840
101412	NANOTTICA 1.4ft VP ABS <sub>c</sub> 4400/840
101413	NANOTTICA 1.4ft VP ABS <sub>c</sub> 6400/840
110273	NANOTTICA 1.4ft VP ABS <sub>c</sub> 8000/840
101415	NANOTTICA 1.5ft VP ABS <sub>c</sub> 4000/840
101416	NANOTTICA 1.5ft VP ABS <sub>c</sub> 5500/840
101417	NANOTTICA 1.5ft VP ABS <sub>c</sub> 8000/840
110274	NANOTTICA 1.5ft VP ABS <sub>c</sub> 10000/840

Non-dimmable driver - stainless clips [c]

3F	M3hAt	3F M3hAt
101419	x	x
101420	x	x
101422	108331	108339
101423	108332	108340
101424	108333	108341
110275	x	x
101426	108335	108343
101427	108336	108344
101428	108337	108345
110276	x	x

## NANOTTICA VP ABS DALI

Code	Type
101446	NANOTTICA 1.2ft VP ABS 1600/840 DALI
101447	NANOTTICA 1.2ft VP ABS 2200/840 DALI
101449	NANOTTICA 1.4ft VP ABS 3200/840 DALI
101450	NANOTTICA 1.4ft VP ABS 4400/840 DALI
101451	NANOTTICA 1.4ft VP ABS 6400/840 DALI
110277	NANOTTICA 1.4ft VP ABS 8000/840 DALI
101453	NANOTTICA 1.5ft VP ABS 4000/840 DALI
101454	NANOTTICA 1.5ft VP ABS 5500/840 DALI
101455	NANOTTICA 1.5ft VP ABS 8000/840 DALI
110278	NANOTTICA 1.5ft VP ABS 10000/840 DALI

### Digital dimmable driver DALI - plastic clips

3F	M3hAt	3F M3hAt
x	x	x
x	x	x
101460	108347	108355
101461	108348	108356
101462	108349	108357
110279	x	x
101464	108351	108359
101465	108352	108360
101466	108353	108361
110280	x	x

## NANOTTICA VP ABSc DALI

Code	Type
101484	NANOTTICA 1.2ft VP ABSc 1600/840 DALI
101485	NANOTTICA 1.2ft VP ABSc 2200/840 DALI
101487	NANOTTICA 1.4ft VP ABSc 3200/840 DALI
101488	NANOTTICA 1.4ft VP ABSc 4400/840 DALI
101489	NANOTTICA 1.4ft VP ABSc 6400/840 DALI
110281	NANOTTICA 1.4ft VP ABSc 8000/840 DALI
101491	NANOTTICA 1.5ft VP ABSc 4000/840 DALI
101492	NANOTTICA 1.5ft VP ABSc 5500/840 DALI
101493	NANOTTICA 1.5ft VP ABSc 8000/840 DALI
110282	NANOTTICA 1.5ft VP ABSc 10000/840 DALI

### Digital dimmable driver DALI - stainless clips (c)

3F	M3hAt	3F M3hAt
x	x	x
x	x	x
101498	108363	108371
101499	108364	108372
101500	108365	108373
110283	x	x
101502	108367	108375
101503	108368	108376
101504	108369	108377
110284	x	x

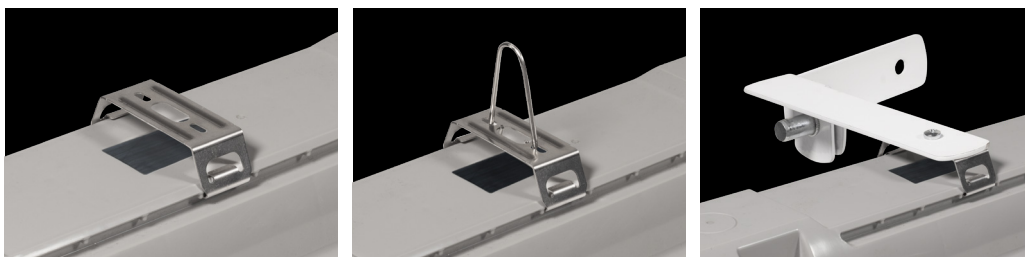
## LEGEND

- 3F** - 3-phase 5 core through-wiring in the luminaire
- M3hAt** - emergency back-up source with 3 hour operating time for maintained emergency illumination with battery autotest
- 3F M3hAt** - 3-phase 5 core through-wiring in the luminaire (L3 used for emergency unit unswitched power supply)

- DALI** - version with digital dimmable driver DALI
- DALI 3F** - 3-phase 7 core through-wiring in the luminaire
- DALI 3F M3hAt** - 3-phase 7 core through-wiring in the luminaire (L3 used for emergency unit unswitched power supply)

## LIGHT FITTING ATTACHMENT

- a) Directly to a ceiling or a wall with the use of screws and stainless brackets
- b) Suspension with the use of stainless hooks
- c) Attachment with the use of side hangers to the wall - is not included in accessories



## VARIABLE INSTALLATION PITCH

NANOTTICA VP ABS



## LIGHT FITTING DETAILED VIEW

NANOTTICA VP ABS

