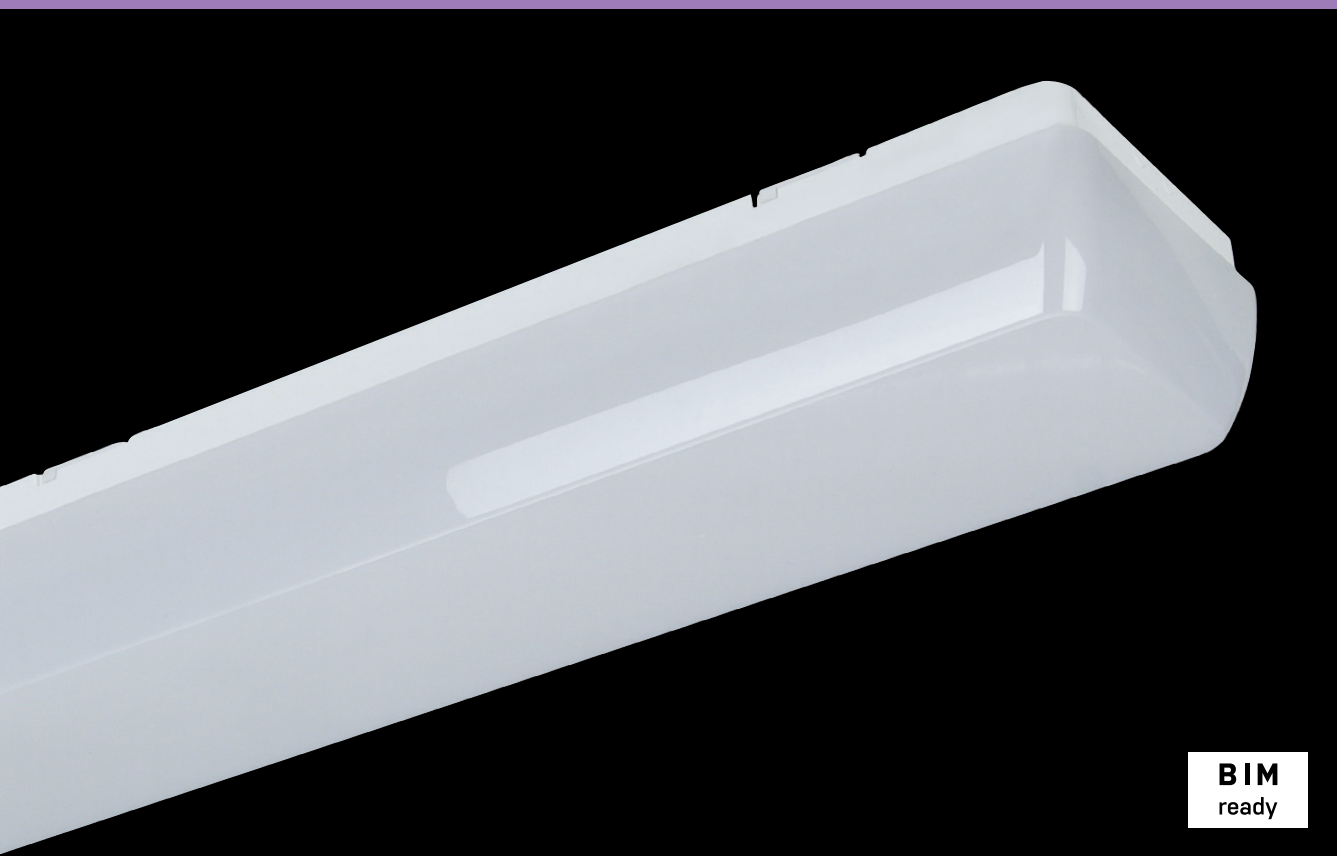


LINEA



BIM
ready

... indoor, surface-mounted, plastic, MultiLumen.

USE

LINEA family is a perfect lighting solution of modern and technically functional illumination. It offers ceiling and wall-mounted luminaires with balanced shadowing and uniform light. Thanks to various sizes, individual premises as well as public buildings can be attractively illuminated.

Thanks to the MultiLumen function, the luminaire can be adjusted for changing lighting requirements without much effort.

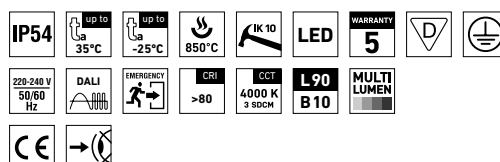
The Linea light fitting line can be used as a comprehensive solution for lighting of office buildings, schools, hospitals, libraries, as well as individual lighting of flat interiors, corridors, sanitary and welfare facilities.

Thanks to its high luminous efficiency and low electricity consumption it is a suitable replacement for light fittings with fluorescent tubes.

ADVANTAGES

- Light fitting protection **IP54**
- Maximum ambient temperature up to **t_a = 35 °C**
- Lifetime: 50,000 hours / L90B10
- Diffuser: translucent polycarbonate (PC) = high light transmission
- Body: white polycarbonate (PC) = high mechanical resistance
- Up to 45 % lower electricity consumption when compared to tubes T5
- In DALI version possibility of constant luminous flux for whole lifetime (CLO)

- **MultiLumen (ML)** function enables simple switching between up to four luminous fluxes via driver's DIP switch.
- Standard model - CRI > 80: 4000 K
- At request CRI > 80: 3000 K, 5000 K, 6500 K, CRI > 90: 3000 K, 4000 K, 5000 K, 6500 K
- It can be delivered in dimmable or emergency version

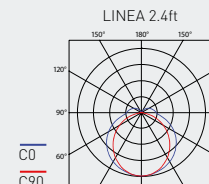
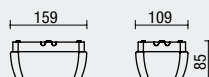
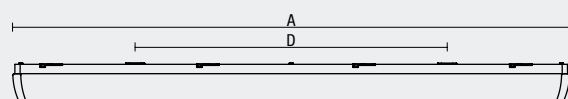


LINEA



TECHNICAL DESCRIPTION

- Light fitting protection: IP54
- Maximum ambient temperature: $t_a = 35^\circ\text{C}$, Maximum ambient temperature: $t_a = 0-35^\circ\text{C}$ (version with emergency back-up source M3hAt)
- Maximum system efficacy: 146 lm/W
- The watt and lumen values can vary by $\pm 7,5\%$
- Standard model - CRI > 80: 4000 K
- MacAdam = 3 SDCM
- Lifetime: 50,000 hours / L90B10
- Diffuser: translucent polycarbonate (PC), UV stable, impact-resistant
- Body: white polycarbonate (PC), UV stable, impact-resistant
- Reflector: steel sheet, white colour (RAL 9003)
- **MultiLumen (ML):** luminous flux variable in up to 4 steps. In the standard version preset maximum luminous flux.
- Rotary cap: polyamide + 10 % glass fibre
- Sealing: polyurethane (PUR), foamed body groove
- Cable glands: rubber (SBS)
- Terminal block: screwless, three-pole (basic version)
- Electric equipment: LED modules, current driver or current driver DALI



Type	Luminous flux of LED modules [lm]	Preselected Step 1 of MultiLumen function			Net weight [kg]	A [mm]	D [mm]
		Luminous flux of light fitting [lm]	Power consumption [W]	System efficacy [lm/W]			
For ambient temperature t _a = 35 °C - body: white polycarbonate - diffuser: translucent polycarbonate							
LINEA 1.4ft 3200/840	3260	2740	20,1	136	1,9	1160	650
LINEA 1.4ft 4400/840	4520	3800	27,3	139	1,9	1160	650
LINEA 2.4ft 6400/840	6520	5350	38,4	139	2,5	1160	650
LINEA 2.4ft 8800/840	8980	7360	52,8	139	2,5	1160	650

Type	MultiLumen function								
	Step 2			Step 3			Step 4		
	Luminous flux of light fitting [lm]	Power consumption [W]	System efficacy [lm/W]	Luminous flux of light fitting [lm]	Power consumption [W]	System efficacy [lm/W]	Luminous flux of light fitting [lm]	Power consumption [W]	System efficacy [lm/W]
LINEA 1.4ft 3200/840 ML	2370	17,3	137	2000	14,6	137	1620	11,7	138
LINEA 1.4ft 4400/840 ML	3290	23,3	141	2780	19,5	143	2250	15,8	142
LINEA 2.4ft 6400/840 ML	4630	32,9	141	3900	27,4	142	3170	22,0	144
LINEA 2.4ft 8800/840 ML	6390	44,9	142	5400	37,4	144	4380	30,1	146

LINEA

Diffuser made of translucent polycarbonate

Code	Type	ML	M3hAt	DALI	DALI M3hAt	SNS	COR
63150	LINEA 1.4ft 3200/840	110341	110129	63153	110131	110115	110117
63160	LINEA 1.4ft 4400/840	110342	110130	63163	110132	110116	110118
63250	LINEA 2.4ft 6400/840	110343	109909	63253	109912	63251	63258
63260	LINEA 2.4ft 8800/840	110344	109910	63263	109913	63261	63268

LEGEND

- ML** - MultiLumen version with variable luminous flux
M3hAt - emergency back-up source with 3 hour operating time for maintained emergency illumination with battery autotest
DALI - version with digital dimmable driver DALI
SNS - version with microwave motion sensor
COR - version with digital dimmable driver DALI and set CORRIDOR function

LIGHT FITTING ATTACHMENT AND ITS DETAILED VIEW

Directly to a ceiling or a wall with the use of screws

