

INNOVA WB ABS



... chemically resistant, for areas with low ceilings of 2.5 – 5 m.

USE

Closed and non-dismountable light fitting according to the standard ČSN EN 60598-1 part 4 intended for chemically challenging or agricultural premises with incidence of vapours like ammonia, lye, alkaline compounds and hot water (hydrolysis). Thanks to the **Wide Beam** optics it is suitable for inside spaces with low ceilings, intended for suspension height from 2.5 to 5 m, e.g. **inside walls and corridors of low agricultural and industrial buildings, workshops, corridors, cellars, farms, stables and laboratories** without explosion hazard. The structural design of the light fitting (IP69) allows even placement in food-processing industry - HACCP.

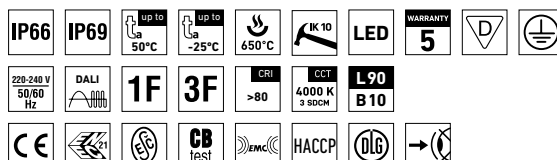
The light fitting resists dust, humidity and washing with spouting water up to 80°C. The body and the diffuser made of ABS material have high chemical resistance.

An **external terminal block** makes it easy and quick to connect the supply cable.

Emissions in the environment of use may reduce the usability of the plastics; for more information see page 407.

ADVANTAGES

- Light fitting protection **IP66 / IP69**
- High temperature resistance in a range from $t_a = -25^{\circ}\text{C}$ to $t_a = 50^{\circ}\text{C}$
- Lifetime: 50 000 hours / L90B10
- Lifetime: 100 000 hours / L80B10
- High chemical resistance
- **Wide Beam (WB)**, ceiling height 2.5 to 5 m
- **Variable suspension pitch**; optional installation of light fitting even on an existing structure on which the original light fittings were suspended
- **External terminal block makes it easy to connect the supply cable**
- Optional arrangement of light fittings in line without gaps
- **Fully automatic 100% control of functionality and tightness (leak test) during production**
- Easy cleaning and maintenance without need of replacing the light sources
- Eliminated risk of mechanical and electrostatic damage to LED chips
- Optional throughwiring (up to 5 wires inside the light fitting)
- Optional delivery in dimmable version
- Certificates: **ESČ, ENEC, CB, DLG, HACCP**

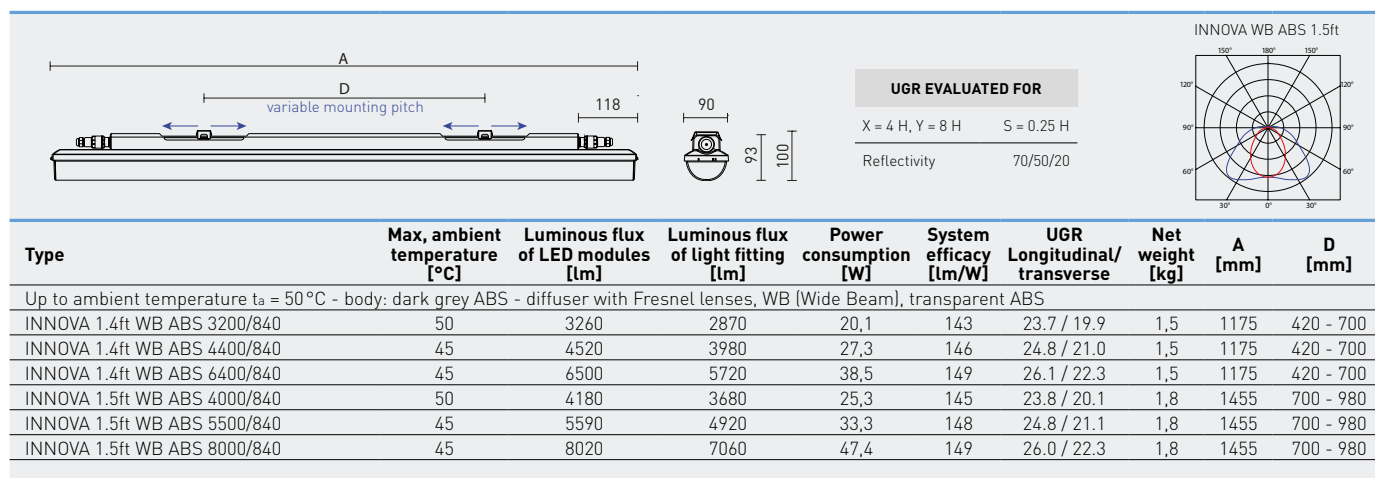


INNOVA WB ABS



TECHNICAL DESCRIPTION

- Light fitting protection: **IP66 / IP69**
- Maximum ambient temperature: **$t_a = 50^\circ\text{C}$**
- Lifetime: 50 000 hours / L90B10
- Lifetime: 100 000 hours / L80B10
- Maximum light fitting efficiency: 151 lm/W
- **CRI > 80: 4000 K** – standard
- CRI > 80: 3000 K, 5000 K, 6500 K – on request
- CRI > 90: 3000 K, 4000 K, 5000 K, 6500 K – on request
- MacAdam = 3 SDCM
- Diffuser: transparent ABS with Fresnel lenses, **Wide Beam** (high chemical resistance, UV stability)
- Body: dark grey ABS (high chemical resistance, UV stability)
- Snap-in mounting clips: stainless steel
- Ventilation membrane in the base eliminating vacuum and condensate build-up
- 3 or 5-pole **external terminal block**, conductor cross-sectional area: 1.5 or 2.5 mm²
- Fittings may be **lined with zero distance** between them
- Optional constant luminous flux (CLO) in DALI version
- Electric equipment: LED modules, fixed output driver or DALI driver
- The package includes: stainless hooks and stainless brackets
- The values stated for power consumption and luminous flux are in a tolerance of $\pm 7,5\%$



Type	Max, ambient temperature [°C]	Luminous flux of LED modules [lm]	Luminous flux of light fitting [lm]	Power consumption [W]	System efficacy [lm/W]	UGR Longitudinal/transverse	Net weight [kg]	A [mm]	D [mm]
Up to ambient temperature $t_a = 50^\circ\text{C}$ - body: dark grey ABS - diffuser with Fresnel lenses, WB (Wide Beam), transparent ABS									
INNOVA 1.4ft WB ABS 3200/840	50	3260	2870	20,1	143	23.7 / 19.9	1,5	1175	420 - 700
INNOVA 1.4ft WB ABS 4400/840	45	4520	3980	27,3	146	24.8 / 21.0	1,5	1175	420 - 700
INNOVA 1.4ft WB ABS 6400/840	45	6500	5720	38,5	149	26.1 / 22.3	1,5	1175	420 - 700
INNOVA 1.5ft WB ABS 4000/840	50	4180	3680	25,3	145	23.8 / 20.1	1,8	1455	700 - 980
INNOVA 1.5ft WB ABS 5500/840	45	5590	4920	33,3	148	24.8 / 21.1	1,8	1455	700 - 980
INNOVA 1.5ft WB ABS 8000/840	45	8020	7060	47,4	149	26.0 / 22.3	1,8	1455	700 - 980

INNOVA WB ABS

Diffuser with Fresnel lenses, Wide Beam, transparent ABS

Type	1x3P	1x5P	DALI 1x5P	2x3P	2x5P	DALI 2x5P
INNOVA 1.4ft WB ABS 3200/840	31696	31702	31708	31715	31721	31727
INNOVA 1.4ft WB ABS 4400/840	31697	31703	31709	31716	31722	31728
INNOVA 1.4ft WB ABS 6400/840	31698	31704	31710	31717	31723	31729
INNOVA 1.5ft WB ABS 4000/840	31699	31705	31711	31718	31724	31730
INNOVA 1.5ft WB ABS 5500/840	31700	31706	31712	31719	31725	31731
INNOVA 1.5ft WB ABS 8000/840	31701	31707	31713	31720	31726	31732

Example of type marking: 31710 = INNOVA 1.4ft WB ABS 6400/840 **DALI 1x5P**

LEGEND

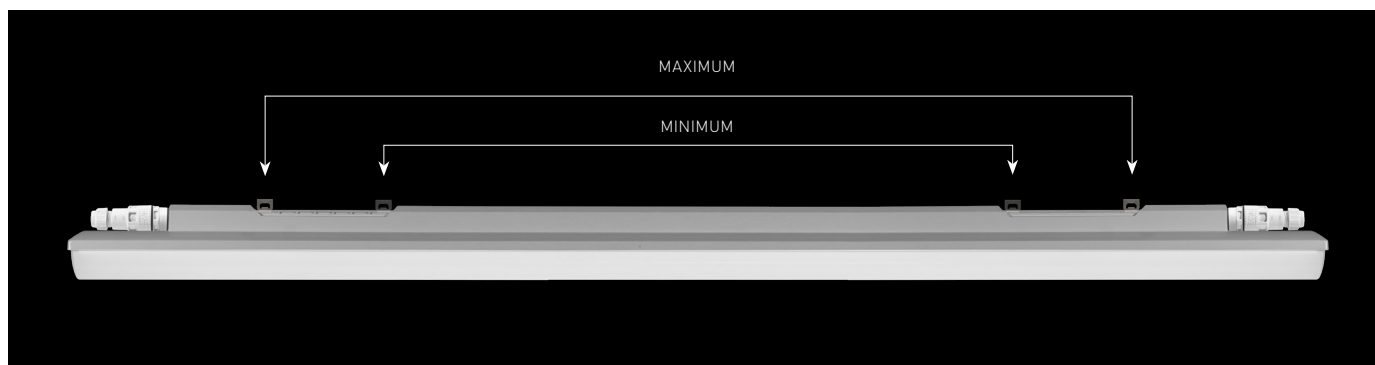
- 1x3P** - a version featuring a non-dimmable ballast and a single 3-pole external terminal block
- 1x5P** - a version featuring a non-dimmable ballast and a single 5-pole external terminal block
- DALI 1x5P** - a version featuring a digitally dimmable ballast and a single 5-pole external terminal block
- 2x3P** - a version featuring a non-dimmable ballast, two 3-pole external terminal blocks and 3-wire connecting cables (1F), for continuous row installation
- 2x5P** - a version featuring a non-dimmable ballast, two 5-pole external terminal blocks and 5-wire connecting cables (3F), for continuous row installation
- DALI 2x5P** - a version featuring a digitally dimmable ballast, two 5-pole external terminal blocks and 5-wire connecting cables (DALI 1F), for continuous row installation

LIGHT FITTING ATTACHMENT

- a) Directly to a ceiling or a wall with the use of screws and stainless brackets
- b) Suspension with the use of stainless hooks
- c) Attachment with the use of side hangers to the wall - is not included in accessories



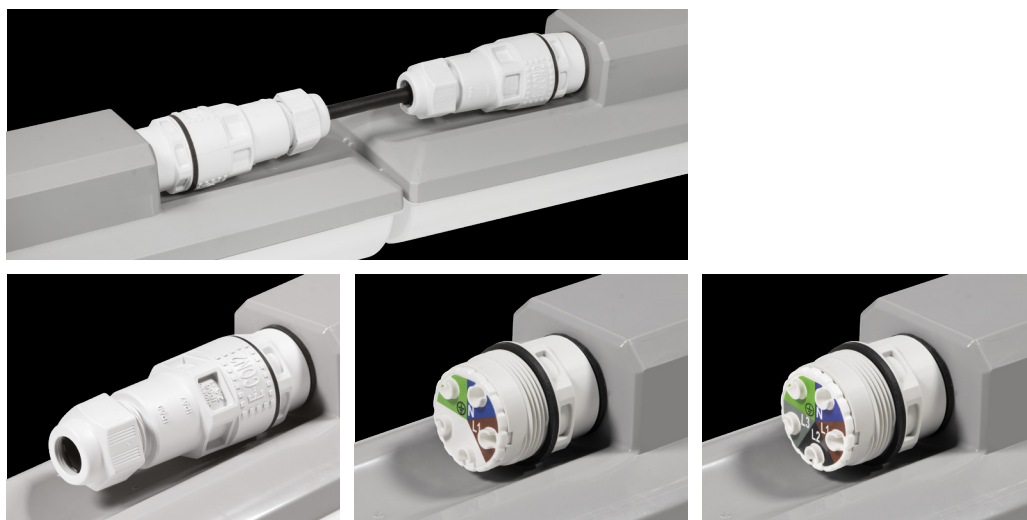
VARIABLE INSTALLATION PITCH



LIGHT FITTING INTERCONNECTION

An external terminal block is used to ensure the supply cable can easily and quickly be connected with no need to open the light fixture.

Interconnection of light fittings without spacing



LIGHT FITTING DETAILED VIEW

INNOVA WB ABS

