

# FUTURA MAX



... for extreme temperatures -40 °C to +70 °C.

## USE

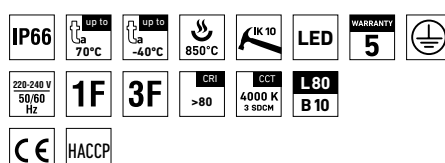
The light fitting is suitable for indoor and outdoor spaces with roof with extreme ambient temperatures from **(-40 °C to +70 °C)**. The light fitting is destined mainly for heating stations, metallurgical lines, glass-works, as well as for freezers, cooling plants and other premises without danger of explosion of gases, dusts and flammable vapors.

The light fitting is resistant to dust, moisture and spouting water. The body and the diffuser made of polycarbonate (PC) have the increased resistance against deformation and impact.

Emissions in the environment of use may reduce the usability of the plastics; for more information see page 407.

## ADVANTAGES

- Light fitting protection **IP66**
- Minimum ambient temperature up to **t<sub>a</sub> = -40 °C**
- Maximum ambient temperature up to **t<sub>a</sub> = 70 °C**
- Lifetime: 50,000 hours / L80B10
- Possibility of using in even higher ambient temperatures under the condition of a shortened service life of the light fitting – parameters solved within a particular project
- Diffuser: translucent polycarbonate (PC) = high mechanical resistance
- Body: grey polycarbonate with Al coolers (PC Al) = high mechanical resistance
- Up to 45 % lower electricity consumption when compared to tubes T5
- Constant luminous flux even in ambient temperature of -40 °C
- Standard model - CRI > 80: 4000 K
- At request CRI > 80: 3000 K, 5000 K
- Through-wiring of up to 10 wires at body
- Certification: HACCP

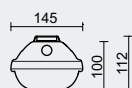
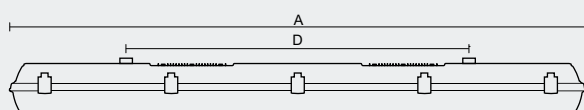


## FUTURA MAX PCc Al



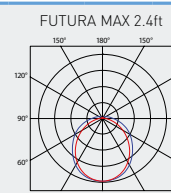
## TECHNICAL DESCRIPTION

- Light fitting protection: IP66
- Minimum ambient temperature:  $t_a = -40^\circ\text{C}$
- Maximum ambient temperature:  $t_a = 70^\circ\text{C}$
- Lifetime: 50,000 hours / L80B10
- Possibility of using in even higher ambient temperatures under the condition of a shortened service life of the light fitting – parameters solved within a particular project
- Maximum system efficacy: 164 lm/W
- The watt and lumen values can vary by  $\pm 7,5\%$
- Standard model - CRI > 80: 4000 K
- MacAdam = 3 SDCM
- Diffuser: translucent polycarbonate (PC), UV stable, impact-resistant
- Body: grey polycarbonate with Al coolers (PC Al), UV stable, impact-resistant
- Reflector: steel sheet, white colour (RAL 9003)
- Ventilation plug: type BVPB-01 made of polyamide, size M12  $\times$  1.5
- Clips: stainless steel + polyamide
- Sealing: polyurethane (PUR), foamed body groove
- Cable glands: screwed PG 13.5
- Distance part: polyamide + 10 % glass fibre
- Terminal block: screwless, three-pole (basic version)
- Installation: package contains stainless hooks and stainless brackets
- Electric equipment: LED modules, current driver



## UGR EVALUATED FOR

X = 4 H, Y = 8 H S = 0.25 H  
Reflectivity 70/50/20



Type	Max. ambient temperature [°C]	Luminous flux of LED modules [lm]	Luminous flux of light fitting [lm]	Power consumption [W]	System efficacy [lm/W]	UGR Longitudinal/transverse	Net weight [kg]	A [mm]	D [mm]
For ambient temperature $t_a = 70^\circ\text{C}$ - body: grey polycarbonate with Al coolers - diffuser: translucent polycarbonate									
FUTURA 1.5ft MAX PCc Al 4000/840	70	3850	3620	23,3	155	21.5 / 19.9	3,05	1452	940
FUTURA 1.5ft MAX PCc Al 5500/840	65	5340	5020	31,9	157	22.7 / 21.0	3,05	1452	940
FUTURA 2.4ft MAX PCc Al 6400/840	65	6240	5870	36,3	162	24.0 / 22.2	2,65	1172	700
FUTURA 2.4ft MAX PCc Al 8800/840	60	8690	8170	49,7	164	25.1 / 23.3	2,65	1172	700
FUTURA 2.5ft MAX PCc Al 8000/840	65	7770	7300	44,4	164	24.0 / 22.3	3,15	1452	940
FUTURA 2.5ft MAX PCc Al 11000/840	60	12310	11570	71,1	163	25.6 / 23.9	3,15	1452	940

## FUTURA MAX PCc Al

Non-dimmable driver - stainless clips [c]

Code	Type	1F	3F	DALI	DALI 3F
79820	FUTURA 1.5ft MAX PCc Al 4000/840	79821	79823	79825	79826
79830	FUTURA 1.5ft MAX PCc Al 5500/840	79831	79833	79835	79836
79840	FUTURA 2.4ft MAX PCc Al 6400/840	79841	79843	79845	79846
79800	FUTURA 2.4ft MAX PCc Al 8800/840	79801	79803	79805	79806
79850	FUTURA 2.5ft MAX PCc Al 8000/840	79851	79853	79855	79856
79810	FUTURA 2.5ft MAX PCc Al 11000/840	79811	79813	79815	79816

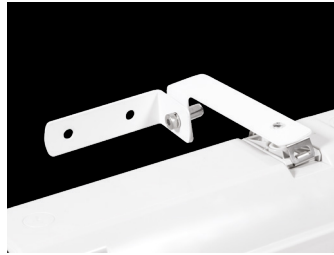
## LEGEND

- 1F** - 1-phase 3 core through-wiring in the luminaire  
**3F** - 3-phase 5 core through-wiring in the luminaire

- DALI** - version with digital dimmable driver DALI  
**DALI 3F** - 3-phase 7 core through-wiring in the luminaire

### LIGHT FITTING ATTACHMENT

- a) Directly to a ceiling with the use of screws and stainless brackets
- b) Suspension with the use of stainless hooks
- c) Attachment with the use of side hangers to the wall - is not included in accessories



### LIGHT FITTING DETAILED VIEW

FUTURA MAX

