

FROST



BIM
ready

... for cold stores and freezing facilities with temperatures down to -25 °C

USE

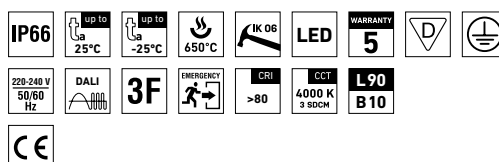
Temperatures of chilled foods range from 0–5 degrees, whilst in freezing facilities can drop up to -25 degrees Celsius. Suitable luminaires for such demanding environments must handle extreme low temperatures, withstand condensation and vapors, have low maintenance and long service life to keep costs low.

Our lighting fixture for freezing storage and chilled storage surroundings is made of ABS material, is weather-proofed and chemically resistant (IP66 and IK 06).

FROST provide with high quality and good solution enduring a long service life of 50 000 hours.

ADVATAGES

- Light fitting protection IP66
- Minimum ambient temperature down to $t_a = -25\text{ °C}$
- Lifetime: 50,000 hours / L90B10
- Lifetime: 100,000 hours / L80B10
- Diffuser: translucent acrylate (AC), UV stable, chemically resistant
- Body: dark grey ABS, UV stable, chemically resistant
- Constant luminous flux even in ambient temperatures up to -25 °C
- Standard model - CRI > 80: 4000 K
- At request CRI > 80: 3000 K, 5000 K, 6500 K, CRI > 90: 3000 K, 4000 K
- It can be delivered in dimmable or emergency version
- Through-wiring of up to 5 wires at body
- Certification: CE

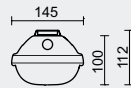
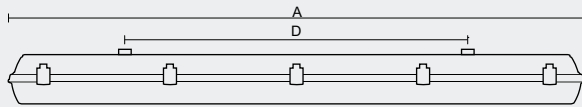


FROST



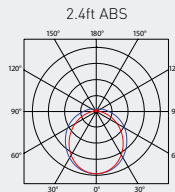
TECHNICAL DESCRIPTION

- Light fitting protection: IP66
- Minimum ambient temperature: $t_a = -25\text{ °C}$, Minimum ambient temperature: $t_a = -20\text{ °C}$ (version with emergency back-up M3hAt)
- Maximum system efficacy: 153 lm/W
- The watt and lumen values can vary by $\pm 7,5\%$
- Standard model - CRI > 80: 4000 K
- MacAdam = 3 SDCM
- Lifetime: 50,000 hours / L90B10
- Lifetime: 100,000 hours / L80B10
- Diffuser: translucent acrylate (AC), UV stable, chemically resistant
- Body: dark grey ABS, UV stable, chemically resistant
- Reflector: steel sheet, white colour (RAL 9003)
- Clips: polyamide + 15% glass fibre
- Sealing: polyurethane (PUR), foamed body groove
- Cable glands: screwed PG 13.5
- Distance part: polyamide + 10% glass fibre
- Terminal block: screwless, three-pole (basic version)
- Installation: package contains stainless hooks and stainless brackets
- Electric equipment: LED modules, current driver



UGR EVALUATED FOR

X = 4 H, Y = 8 H S = 0.25 H
Reflectivity 70/50/20



Type	Min. ambient temperature [°C]	Luminous flux of LED modules [lm]	Luminous flux of light fitting [lm]	Power consumption [W]	System efficacy [lm/W]	UGR Longitudinal/transverse	Net weight [kg]	A [mm]	D [mm]
For ambient temperature down to $t_a = 25\text{ °C}$ - body: dark grey - diffuser: translucent acrylate									
FROST 2.4ft 6400/840	-25	6520	5740	38,4	149	24.4 / 22.2	2,25	1172	700
FROST 2.4ft 8800/840	-25	8980	7900	52,8	150	25.5 / 23.3	2,25	1172	700
FROST 2.5ft 8000/840	-25	8330	7330	48,3	152	24.5 / 22.4	2,75	1452	940
FROST 2.5ft 11000/840	-25	11260	9910	64,7	153	25.5 / 23.4	2,75	1452	940

The emergency version "M3hAt" operates in a temperature range of -20 to $+25\text{ °C}$ without the need to heat the battery.

FROST

Non-dimmable driver - plastic clips

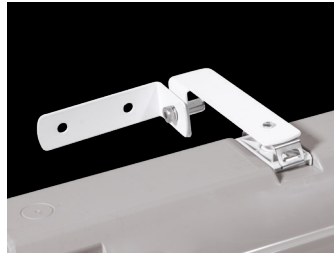
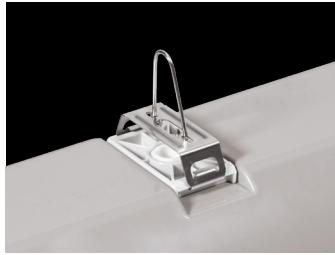
Code	Type	3F	M3hAt	3F M3hAt
103095	FROST 2.4ft 6400/840	103101	109559	109565
103096	FROST 2.4ft 8800/840	103102	109560	109566
103098	FROST 2.5ft 8000/840	103104	109562	109568
103099	FROST 2.5ft 11000/840	103105	109563	109569

LEGEND

- 3F** - 3-phase 5 core through-wiring in the luminaire
M3hAt - emergency back-up source with 3 hour operating time for maintained emergency illumination with battery autotest
3F M3hAt - 3-phase 5 core through-wiring in the luminaire (L3 used for emergency unit unswitched power supply)

LIGHT FITTING ATTACHMENT

- a) Directly to a ceiling or a wall with the use of screws and stainless brackets
- b) Suspension with the use of stainless hooks
- c) Attachment with the use of side hangers to the wall - is not included in accessories

**LIGHT FITTING DETAILED VIEW**

FROST

