

# CANOPUS



... dustproof, waterproof, for high ceilings.

**USE**

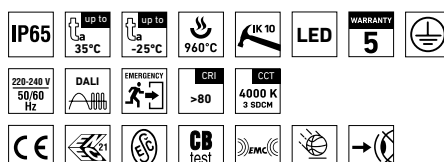
The light fitting is suitable for large operations with high ceilings, industrial outdoor and indoor roofed spaces, warehouses, workshops, sports areas, transport terminals and utility structures without a danger of explosion of gas, dust and combustible fumes.

The light fitting is resistant to deformation, dust and splashing water.

Characteristics of the used tempered glass and its shattering power are controlled by the ČSN EN 12150-1 standard. For applications where spontaneous fracture means a higher safety risk, we recommend to use the version with the safety film [SF].

## ADVANTAGES

- Light fitting protection **IP65**
- Maximum ambient temperature up to **t<sub>a</sub> = 35 °C**
- Lifetime: 50,000 hours / L90B50
- High mechanical robustness IK10
- Diffuser: satinized or transparent tempered safety glass
- Body: steel sheet - white colour (RAL 9003), or inox AISI 304 at request
- Up to 45 % lower electricity consumption when compared to tubes T5
- Possibility of delivery either in a deemed or permanently emergency design M3hAt
- In DALI version possibility of constant luminous flux for whole lifetime (CLO)
- Constant luminous flux even in ambient temperature of -25 °C
- Standard model - CRI > 80: 4000 K
- At request CRI > 80: 3000 K, 5000 K, 6500 K, CRI > 90: 3000 K, 4000 K, 5000 K, 6500 K
- Easy installation with the help of supply connector with cable 0,4 m CYSY 3 × 1,5, without necessity of opening the light fitting
- Certification: ESČ, ENEC, CB, BALL-PROOF

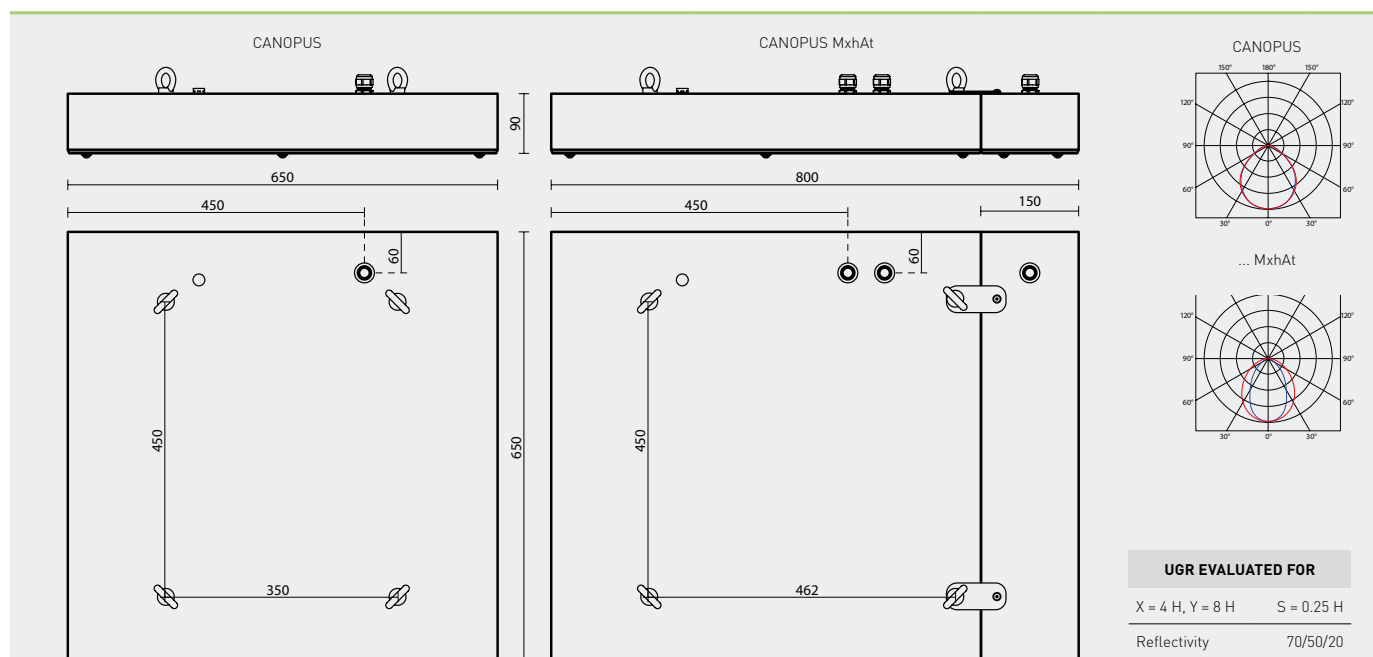


## CANOPUS



## TECHNICAL DESCRIPTION

- Light fitting protection: IP65
- Maximum ambient temperature:  $t_a = 0-35^\circ\text{C}$  and for the design with a back-up power supply M3hAt
- Maximum system efficacy: 141 lm/W
- The watt and lumen values can vary by  $\pm 7,5\%$
- Standard model - CRI > 80: 4000 K
- MacAdam = 3 SDCM
- Lifetime: 50,000 hours / L90B50
- Diffuser: satinized tempered safety glass
- Possibility of delivery of the diffuser with a safety foil (SF)
- EM kit with battery autotesting for M3hAt
- Body: steel sheet, white colour (RAL 9003), or inox AISI 304 at request
- Ventilation plug: type BVPB-01 made of polyamide, size M12  $\times$  1.5
- Sealing: EPDM attached to light fitting body
- Terminal block: interconnecting connector, 0.4 m cable
- Installation: all versions delivered including suspension lugs (4 pcs)
- Electric equipment: LED modules, current driver or current driver DALI (2 – 3 pcs depending on type)



Type	Luminous flux of LED modules [lm]	Luminous flux of light fitting [lm]	Power consumption [W]	System efficacy [lm/W]	UGR Longitudinal/transverse	Net weight [kg]
For ambient temperature $t_a = 35^\circ\text{C}$ - body: steel sheet, white colour - diffuser: satinized tempered safety glass						
CANOPUS 22000/840	23130	18970	134,3	141	23.8 / 23.9	11,6
CANOPUS 26000/840	28870	23670	170,8	139	24.6 / 24.7	11,8
CANOPUS 30000/840	33000	27060	195,2	139	25.1 / 25.2	11,8

Type	Autonomy [hrs]	Emergency light flux of light fitting [lm]	Power in standby mode [W]	Battery type	Net weight [kg]
EM kit for permanent emergency lighting with battery autotesting - diffuser: satinized tempered safety glass					
M3hAt	3	440	1,5	LiFePO <sub>4</sub>	+4,4

## CANOPUS

Code	Type	M3hAt	DALI	DALI M3hAt
74010	CANOPUS 22000/840	74013	74016	74018
74020	CANOPUS 26000/840	74023	74026	74028
74030	CANOPUS 30000/840	74033	74036	74038

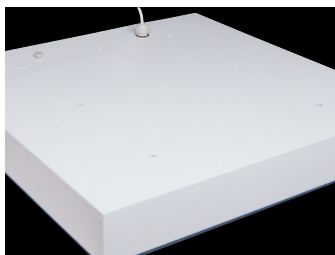
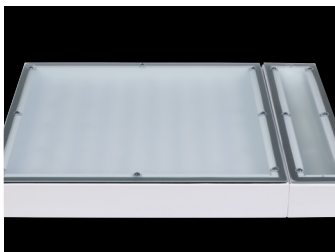
Example of type marking: 74036 = CANOPUS 30000/840 DALI

## LEGEND

- DALI** – version with digital dimmable driver DALI (2 – 3 pcs)
- M3hAt** – emergency back-up source with operating time of 3 hours (SA) for permanent illumination with battery autotesting

**LIGHT FITTING ATTACHMENT**

- a) With help of suspension eyes of M6
- b) With help of a holder directly to the ceiling
- c) With the help of adjustable holder directly on the ceiling or on the wall
- d) With help of a chain hinge

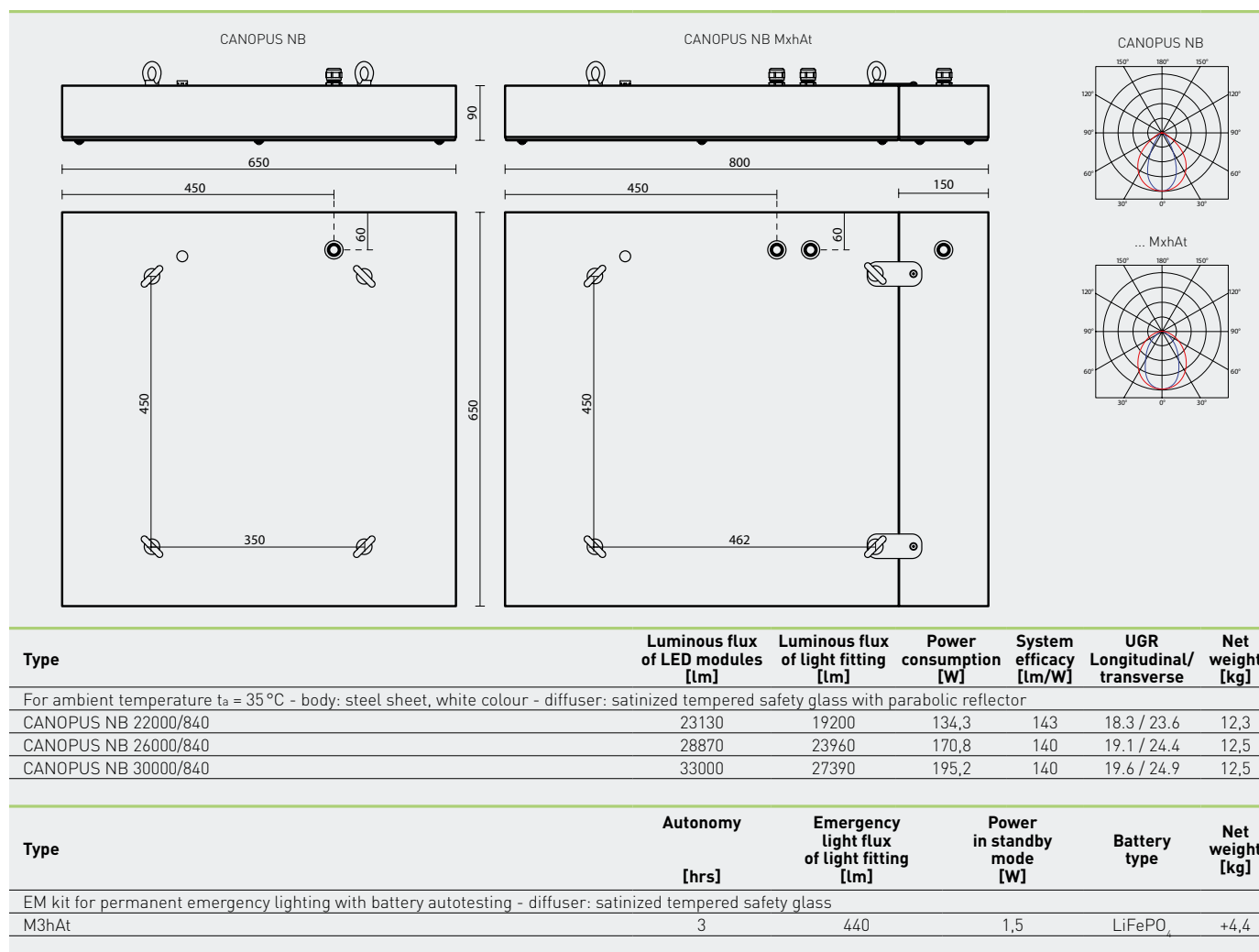
**LIGHT FITTING DETAILED VIEW****LIGHT FITTING DETAILED VIEW WITH AN EMERGENCY MODULE**

## CANOPUS NB



## TECHNICAL DESCRIPTION

- Light fitting protection: IP65
- Maximum ambient temperature:  $t_a = 0-35^\circ\text{C}$  and for the design with a back-up power supply M3hAt
- Maximum system efficacy: 143 lm/W
- The watt and lumen values can vary by  $\pm 7,5\%$
- Standard model - CRI > 80: 4000 K
- MacAdam = 3 SDCM
- Lifetime: 50,000 hours / L90B50
- Diffuser: satinized tempered safety glass
- Possibility of delivery of the diffuser with a safety foil (SF)
- EM kit with battery autotesting for M3hAt
- Reflector: parabolic polished aluminium with narrow emitting characteristics (NB - narrow beam)
- Body: steel sheet, white colour (RAL 9003), or inox AISI 304 at request
- Ventilation plug: type BVPB-01 made of polyamide, size M12  $\times$  1.5
- Sealing: EPDM attached to light fitting body
- Terminal block: interconnecting connector, 0.4 m cable
- Installation: all versions delivered including suspension lugs (4 pcs)
- Electric equipment: LED modules, current driver or current driver DALI (2 – 3 pcs depending on type)



## CANOPUS NB

Code	Type	M3hAt	DALI	DALI M3hAt
74110	CANOPUS NB 22000/840	74113	74116	74118
74120	CANOPUS NB 26000/840	74123	74126	74128
74130	CANOPUS NB 30000/840	74133	74136	74138

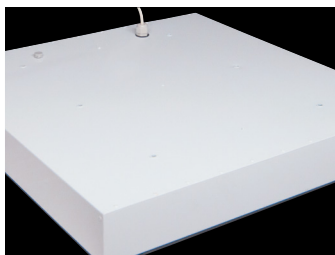
Example of type marking: 74136 = CANOPUS NB 30000/840 DALI

## LEGEND

- DALI** – version with digital dimmable driver DALI (2 – 3 pcs)
- M3hAt** – emergency back-up source with operating time of 3 hours (SA) for permanent illumination with battery autotesting

**LIGHT FITTING ATTACHMENT**

- a) With help of suspension eyes of M6
- b) With help of a holder directly to the ceiling
- c) With the help of adjustable holder directly on the ceiling or on the wall
- d) With help of a chain hinge

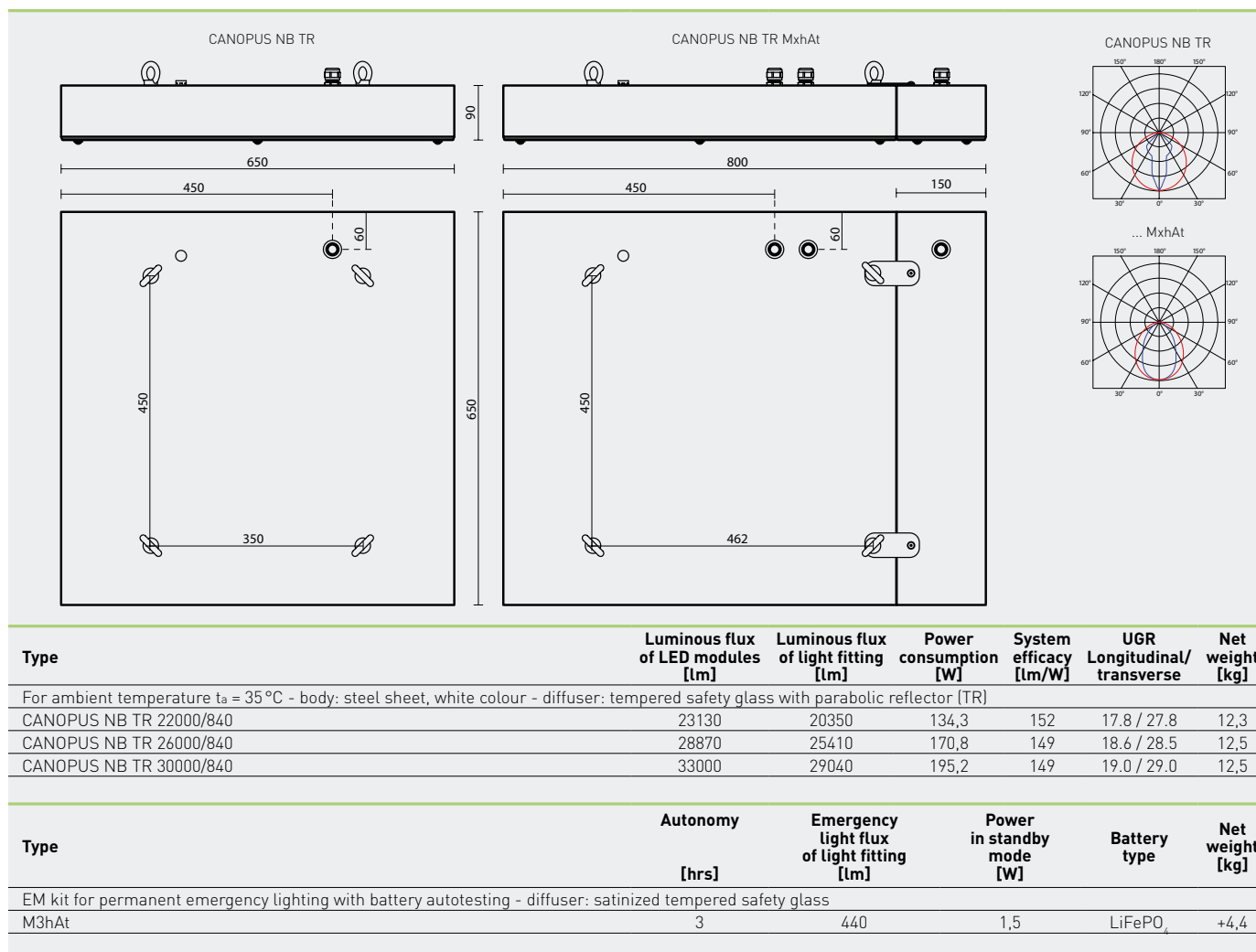
**LIGHT FITTING DETAILED VIEW****LIGHT FITTING DETAILED VIEW WITH AN EMERGENCY MODULE**

## CANOPUS NB TR



## TECHNICAL DESCRIPTION

- Light fitting protection: IP65
- Maximum ambient temperature:  $t_a = 0-35^\circ\text{C}$  and for the design with a back-up power supply M3hAt
- Maximum system efficacy: 152 lm/W
- The watt and lumen values can vary by  $\pm 7,5\%$
- Standard model - CRI > 80: 4000 K
- MacAdam = 3 SDCM
- Lifetime: 50,000 hours / L90B50
- Diffuser: transparent tempered safety glass (TR)
- Possibility of delivery of the diffuser with a safety foil (SF)
- EM kit with battery autotesting for M3hAt
- Reflector: parabolic polished aluminium with narrow emitting characteristics (NB - narrow beam)
- Body: steel sheet, white colour (RAL 9003), or inox AISI 304 at request
- Ventilation plug: type BVPB-01 made of polyamide, size M12  $\times$  1.5
- Sealing: EPDM attached to light fitting body
- Terminal block: interconnecting connector, 0.4 m cable
- Installation: all versions delivered including suspension lugs (4 pcs)
- Electric equipment: LED modules, current driver or current driver DALI (2 – 3 pcs depending on type)



## CANOPUS NB TR

Code	Type	M3hAt	DALI	DALI M3hAt
74210	CANOPUS NB TR 22000/840	74213	74216	74218
74220	CANOPUS NB TR 26000/840	74223	74226	74228
74230	CANOPUS NB TR 30000/840	74233	74236	74238

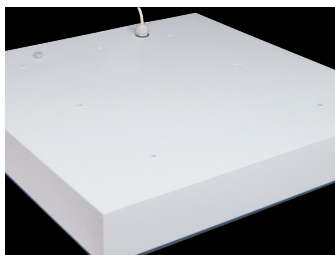
Example of type marking: 74236 = CANOPUS NB TR 30000/840 DALI

## LEGEND

- DALI** – version with digital dimmable driver DALI (2 – 3 pcs)
- M3hAt** – emergency back-up source with operating time of 3 hours (SA) for permanent illumination with battery autotesting

**LIGHT FITTING ATTACHMENT**

- a) With help of suspension eyes of M6
- b) With help of a holder directly to the ceiling
- c) With the help of adjustable holder directly on the ceiling or on the wall
- d) With help of a chain hinge

**LIGHT FITTING DETAILED VIEW****LIGHT FITTING DETAILED VIEW WITH AN EMERGENCY MODULE**